

الجمهورية الجزائرية الديمقراطية الشعبية
République Algérienne Démocratique et Populaire

Ministère de l'Enseignement Supérieur
et de la Recherche Scientifique

Direction de la Coopération et des
Échanges Interuniversitaires

N°: 694/D.C.E.I.U/2018

Alger, le

02 OCT. 2018

3486 / 2018
2018 03

Messieurs les Présidents
des Conférences Régionales Universitaires

Objet: Bourses d'études de la KDI School of Public Policy and Management

P.J/ Une brochure du programme

J'ai l'honneur de vous informer que le Ministère de l'enseignement supérieur et de la recherche scientifique est destinataire d'une offre de bourses d'études complètes et partielles pour les admissions du printemps 2019, émanant de la KDI School of Public Policy and Management du Korea Development Institute (KDI), think tank leader en Corée du Sud en matière de recherche en sciences Sociales.

Il s'agit des programmes de Master et de Doctorat en (Public Policy, Development Policy, Public Management)

Une brochure du programme, est disponible dans le document joint en annexe.

Je vous prie de bien vouloir procéder à une large diffusion de cette offre auprès des établissements de formation supérieure relevant de votre région, et de nous faire parvenir la liste des candidats, ayant postulé à ce programme

Considération distinguée

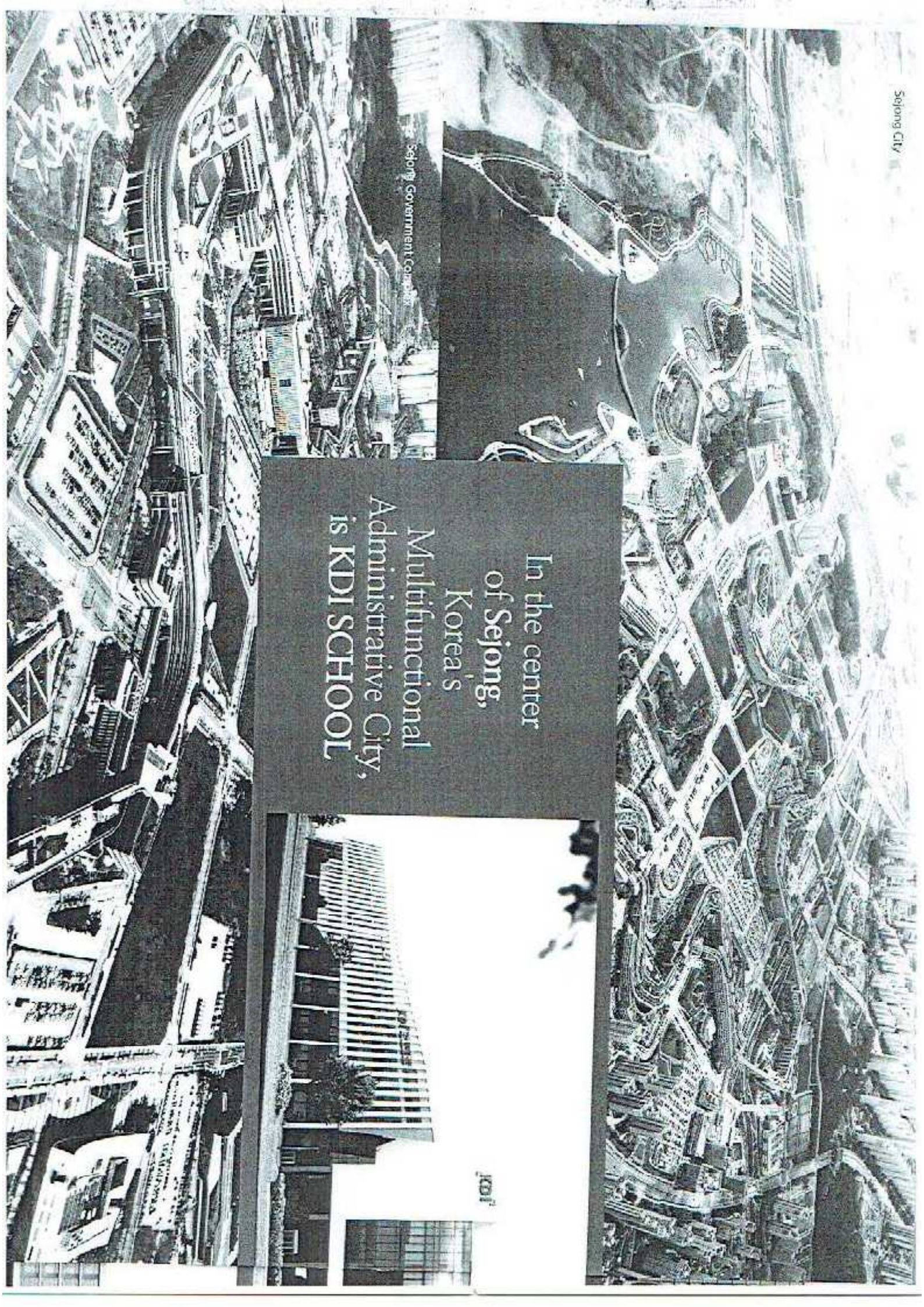
إمضاء: بلعوثيات كريمة لوجهة بلعوثيات
مديرة فرع العلاقات الخارجية
مديرة فرع العلاقات الخارجية
مديرة فرع العلاقات الخارجية
مديرة فرع العلاقات الخارجية

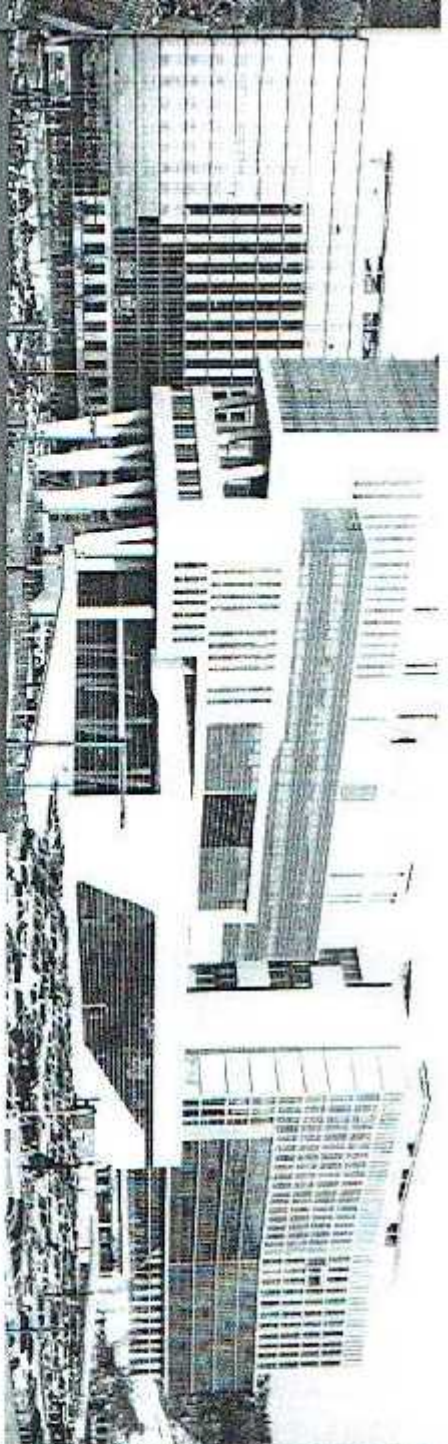


Sejong Government Complex

In the center
of Sejong,
Korea's
Multifunctional
Administrative City,
is KDI SCHOOL

KDI





40
CENTRAL GOV'T
AGENCY

Center of Administration
40 Central Government Agencies relocated to Sejong City, including the Prime Minister's Office (As of 2018).

15
NATIONAL
RESEARCH
INSTITUTE

City of National Policy
15 National Research Institutes relocated to Sejong City, including Korea Development Institute (As of 2018).

2
HOURS

Geographic Advantages
Located in the nation's center, within 2 hours distance from Seoul Metropolitan Area.

52.4
ECO
CITY

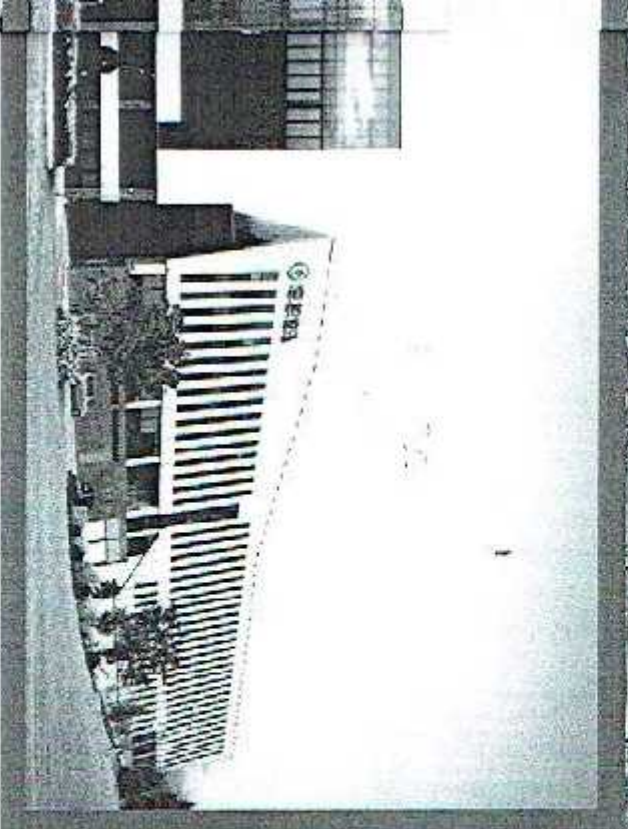
Eco-friendly City
Covered in 52.4% of Forestry, biggest in the nation.

36.7
AVERAGE
AGE

City of Youth
Average age of 36.7, the youngest city in the nation.

365
SAFE
CITY

City of Safety
Operating Safety Monitoring System through City-Integrated Information Center for a safe and secure city, 24 hours a day, 365 days a year.



Korea Research Institute for Human Settlements

KEI School is located in the multicultural administrative city that is Sejong Metropolitan Autonomous City, and provides world-class education specializing in Development and Public Policy by utilizing such geographical advantages of being close to the central government ministries and national research institutes.

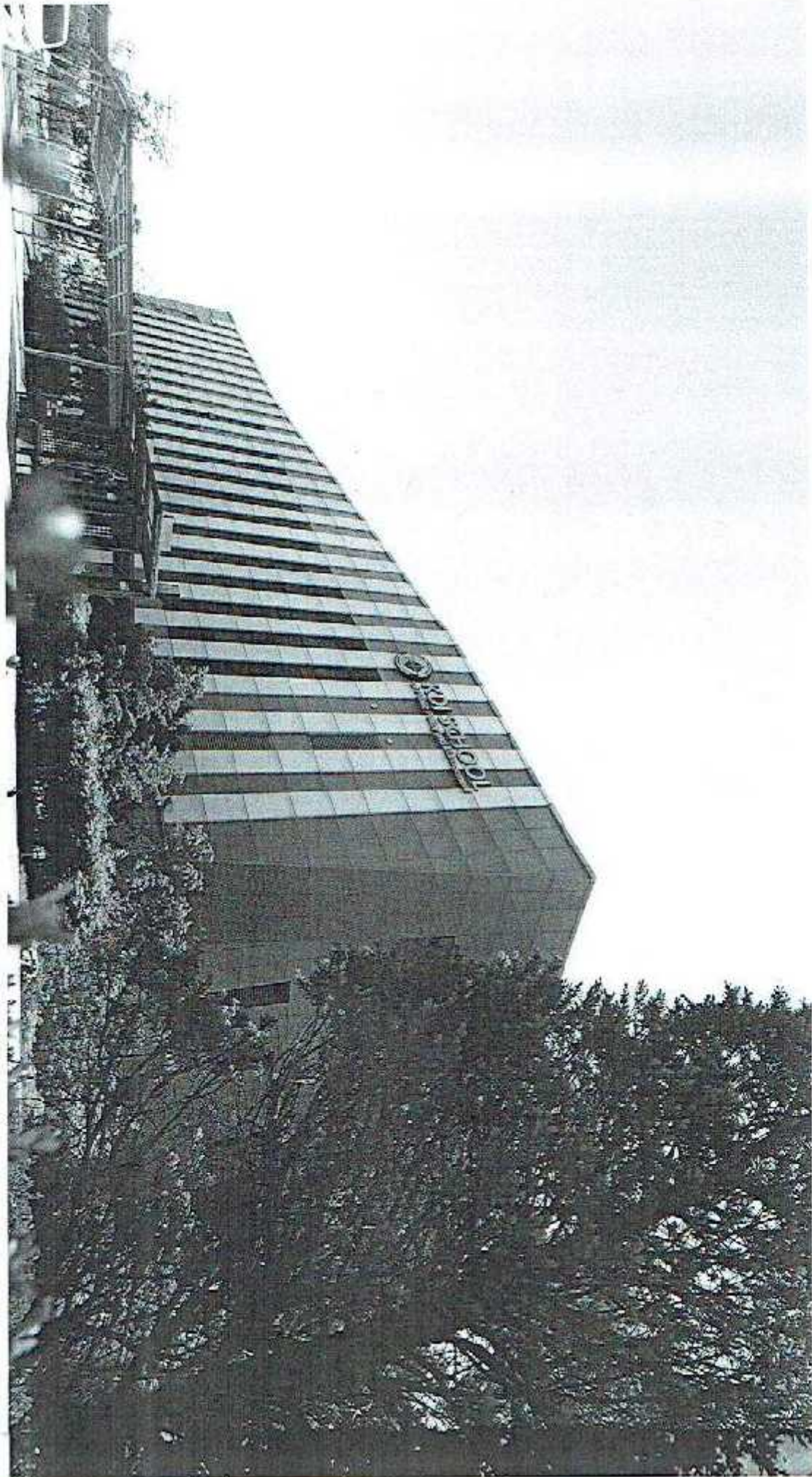
KEI School is leading the mutual growth of the international community by maximizing the synergy with its local community. We plan on heading from being unique to being the best with Sejong City.

Korea Institute of Public Finance

Korea Legislation Research Institute



MISSIONS



Shape the world. Pioneer the future!

Sharing passion and Sharing knowledge
to achieve sustainable development



CONTENTS

KDI School aims to produce international experts equipped with theoretical knowledge as well as practical skills in the field of development economics and public policy.

KDI School also aims to develop future leaders capable of coping with the rapidly changing international environment and exercising global leadership in every sector of our society



■ Why KDI School	
■ KDI School History	
■ Welcoming Message	
Premier Education	12
■ Academic Programs Overview	
■ Master's Programs	
■ MPP(Master of Public Policy)	
■ MDP(Master of Development Policy)	
■ MPM(Master of Public Management)	
■ Concentrations	
■ Ph.D. Programs	
■ Faculty	
Global Perspective	30
■ International Exchange Programs and Career Development Programs	
■ Center for International Cooperation and Capacity Building	
■ Development Research Center	
Worldwide Network	36
■ Student & Alumni Profile	
■ Overseas Partner Institutions	
Extensive Support	42
■ Campus Life & Information	
■ Social Activities	
■ Scholarship Opportunities	
■ Admissions	

Why **KDI SCHOOL**

The KDI School has positioned itself as an unrivaled institution in teaching and research in the field of development and public policy, equipped with cutting-edge facilities and systematic support for students and offering a dynamic and vibrant academic curriculum provided by top-notch faculty members

NASPAA accreditation for
MPP and MDP program

NASPAA
Accreditation



More than 95%
scholarships recipient
for intl students

95%

Globe-spanning
Alumni Network

131
Countries
Over
1,900
Alumni

Vibrant education program
Asia's top think tank KDI
2017 Global go to think
tank Index report

Asia's
NO. 1

Diverse student body,
international students
representing 40% of the
student body

40%

Shape the world. Pioneer the future!

Performing jobs and sharing knowledge
to achieve sustainable development



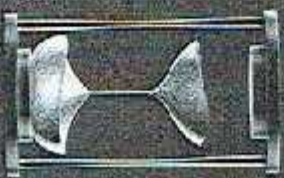
Top-notch Faculty
excel in academic
achievements & field
experience

Top-notch Faculty

With a trimester
system(three semesters
per year), students can
earn their
degree
within 1 year



Part-time
studies
available
for working
professionals



Double degree programs and
student exchange programs

Dual Degree

Most extensive
international
partnership network
among graduate-level
schools in Korea

24 Countries
58 Institutions



KDI School History

1997. **01** Established with authorization from the Ministry of Education and Human Resources Development

1998. **02** Classes begun (4 programs)

03 Dr. Lim Gil-Chin inaugurated as the first dean

1999. **01** Appointed by KOICA (Korea International Cooperation Agency) as partner institution
02 Official name changed from the KDI School of International Policy and Management to the KDI School of Public Policy and Management

03 Designated as an APEC Education Hub

2000. **01** Global Master's Program (GMP) launched, enabling students to acquire dual degrees both at KDI School and abroad

02 Special Program on Economic Policy-Making launched

03 The Center for National Leadership renamed into the Center for Executive Education

2001. **01** Designated as the Korean Hub of the World Bank GDLN(Global Development Learning Network)

02 Ph.D. Program launched

03 Dr. Chung Gil-Seung inaugurated as the second dean

2002. **01** Master's Programs consolidated into the Master of Public Policy (MPP) and Master of Business Administration (MBA) programs

02 KDI School Alumni Association established

2003. **01** E-learning Program launched

02 International Masters Program in Practicing Management (MPPM) established

2004. **01** Master in Foreign Direct Investment (MFDI) established

02 Dr. Chung Gil-Seung inaugurated as the third dean

2005. **01** Digital Library opened

2006. **01** Master in Asset Management (MAM) established

2007. **01** OECD Seoul Center opened

02 Dr. Hahn Sang-Moon inaugurated as the fourth dean



Shape the world. Pioneer the future!

History of public service being recognized
to provide better service to society



2010. 01 MPP program expanded to MPP, MPP/ED, and MPP/PM
12 Dr. Nam, Sang-Woo Inaugurated as the fifth dean
2011. 10 Designated as a participant of the
"Campus Asia" project
2012. 01 Master's programs restructured into MDP and MPP.
Ph.D. in Development Policy established
12 Dr. Nam, Sang-Woo Inaugurated as the sixth dean
2013. 05 Received "Outstanding Institution Award" and
"Outstanding Leadership Award" from National Research
Council For Economics, Humanities and Social Sciences
08 Designated as a participant in the Korea
EU Industrialized Countries Instrument Education
Cooperation Program
2014. 07 Assumed the role of the Global Development
Learning Network(GDLN) Global Secretariat
from the World Bank. MPP program received
accreditation by NASPAA-The Global Standard
in Public Service Education
12 Dr. Chun, Hong-Tack Inaugurated as the seventh dean
2015. 01 Master of Public Management (MPM) launched
2016. 05 Integrated Library System for KDI Central
Library established
05 Received an "Outstanding Institution Award"
from National Research Council for Economics,
Humanities and Social Sciences
11 Became the first Korean research institute to be a
Jie (International Initiative for Impact Evaluation)
Associate Member. Held academic sessions for
public officials from key ministries at
Sejong Government Complex
2017. 03 Appointed by the Ministry of Education as the
certified institution for International Education
Quality Assurance System
07 Case study on Korea's development experience
in the context of Science of Delivery, registered on
The Global Delivery Initiative Library by the World Bank
MPP program received accreditation by NASPAA-
The Global Standard in Public Service Education

Message from the President

The KDI School of Public Policy and Management was founded as an affiliated educational institution of the Korea Development Institute, a premier government economic think tank at the forefront of social science research for the past 47 years. Drawing from the resources of the Institute, the KDI School provides exceptional education that combines current academic theories with comprehensive and innovative practical research to support the national vision and other key policy agendas.

KDI School has achieved remarkable growth in the past 21 years. It earned prestige nationally and is, among emerging Asian countries, the leading graduate school in the field of public policy. It has positioned itself as an unrivaled institution that offers the best Master and Ph.D. courses in Development Policy as well as programs for development cooperation with a focus on two areas: fostering world-class leaders equipped with academic as well as practical expertise, and providing systematic research and education especially on the processes of economic development.

We place a major emphasis on enhancing the capabilities of our students to not only effectively diagnose and seek solutions for policy issues in the public sector, but also successfully manage national affairs through a heightened understanding of the rapidly evolving private sector. Moreover, we strive to promote friendly relationships with many emerging countries and become the institution that leads a shared growth in the global stage by sharing successful development experiences of South Korea, a country which has gone from being underdeveloped to nearly advanced.

On behalf of the KDI School, I look forward to welcoming talented and promising individuals who aspire to contribute to national and international development, cooperation, and co-prosperity.

CHOI, JeongEyo
President, KDI School of Public Policy and Management



Message from the Dean

Delivering wisdom and Sharing Knowledge
to nurture sustainable development



The KDI School of Public Policy and Management opened in March 1998 with the mission of fostering global leaders in the public and private sectors at home and abroad. Since then the KDI School has achieved remarkable growth with our inaugural group of 55 students increasing to over 400 in 2017.

For the past 21 years, over 3100 Korean students who play active roles in diverse sectors including government, public agencies, finance, media, other enterprises, and international organizations have graduated from KDI School. Over 1,900 of KDI School's international alumni are also working in the front lines of their respective fields, creating a global network spanning 131 countries.

The KDI School, by securing a faculty pool with outstanding policy research records, strives to create a rich and interdisciplinary curriculum which combines state-of-the-art theories and the practices of policy making and implementation. Moreover, KDI School's student body with diverse professional and cultural backgrounds provides an open educational environment to nurture international perspectives and global leadership.

After relocating to Sejong City in 2015, South Korea's administrative capital city, KDI School has been leading the education in the public sector by providing innovative educational environment, as well as offering an outstanding level of student support.

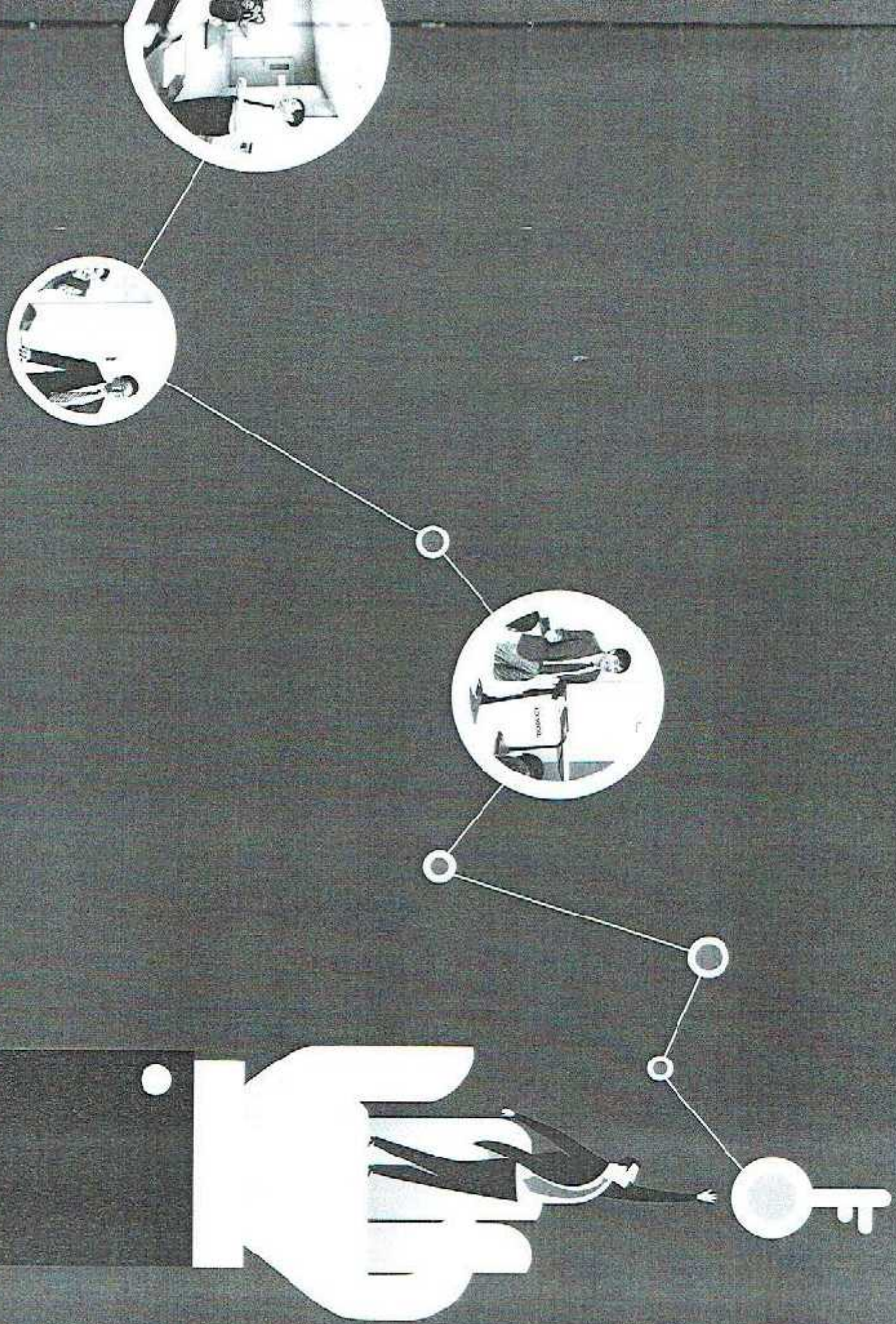
The quality of KDI School's educational programs and faculty now rivals other internationally renowned institutions. KDI School's MPP (Master of Public Policy) program was accredited by the Network of Schools in Public Policy, Affairs, and Administration (NASPPAA) in 2014. This was the first NASPPAA accreditation in Korea, and the second outside the USA. Furthermore, the MDP (Master of Development Policy) program was also accredited by NASPPAA in 2017. Established for over 21 years, KDI School promises to continue offering the best education for talented students in this field: nurturing the core competencies required by the 4th Industrial Revolution and the ability to solve economic and social issues. KDI School will be both your solid foundation and spring board enabling you to achieve your dreams of leading a company, your country and making a difference in the world.

Dean, KDI School of Public Policy and Management

PREMIER EDUCATION

A dynamic and vibrant academic curriculum utilizing the intellectual riches of Korea Development Institute (KDI), accumulated from decades of experience in establishing national policies and agendas.





Academic Programs

Overview

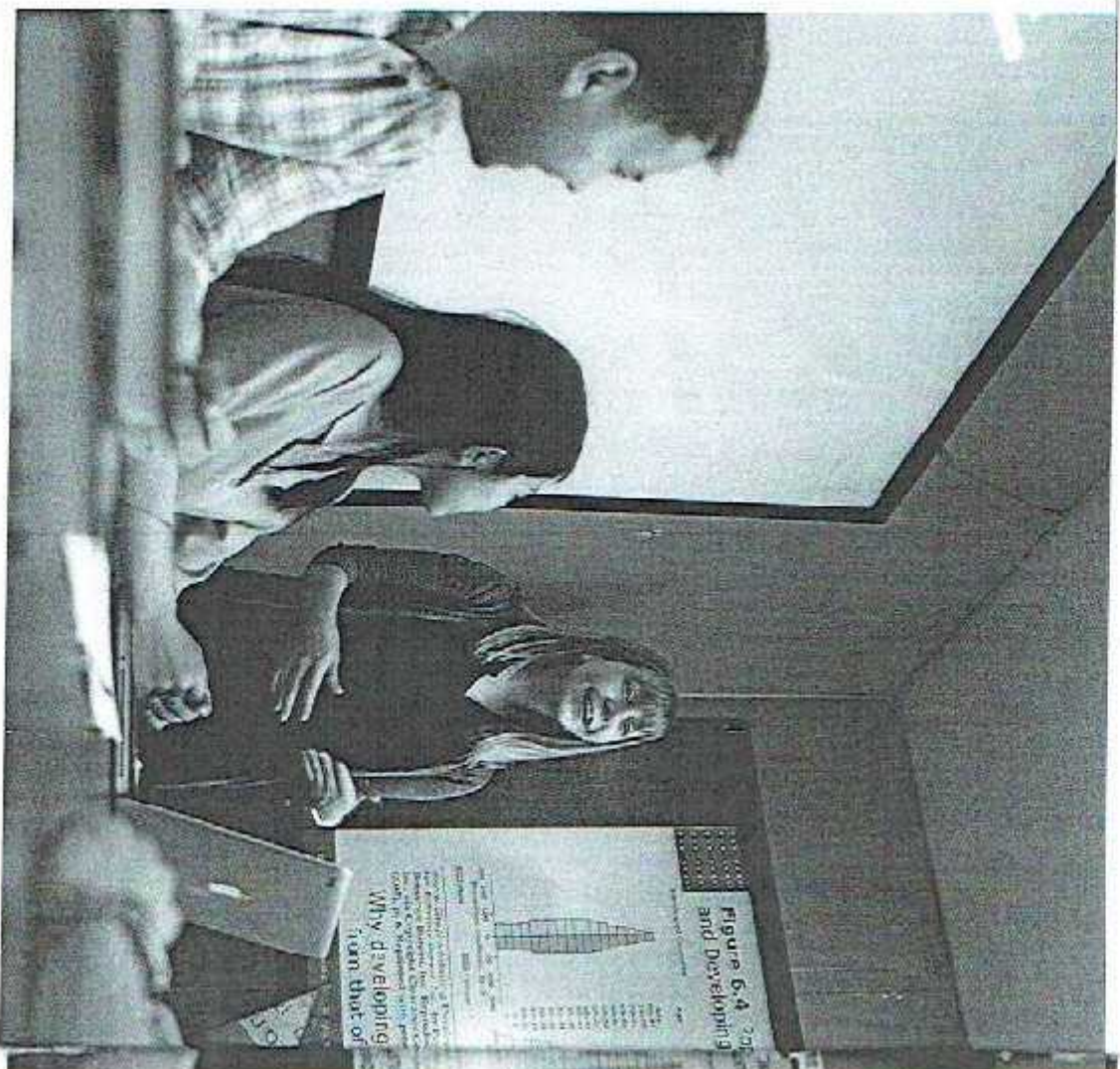
KDI School of Public Policy and Management offers Master degree programs and Doctorate degree programs. The school's curricula draws extensively from the valuable resources accrued at KDI, the research institute. KDI School strives to meet the diverse and professional demands of today's a constantly changing society.

Master Degree Programs

KDI School's Master Degree programs are divided into full-time and part-time courses. Full-time students are able to complete their coursework by the end of the first year. They usually spend the second year working on their research component. The minimum time required for graduation is 1 year. Part-time programs use a flexible combination of evening and weekend classes, and students can graduate within two years without interrupting their careers. Both full-time and part-time courses are available for the MDP, MPP and MPM programs. All classes are conducted in English.

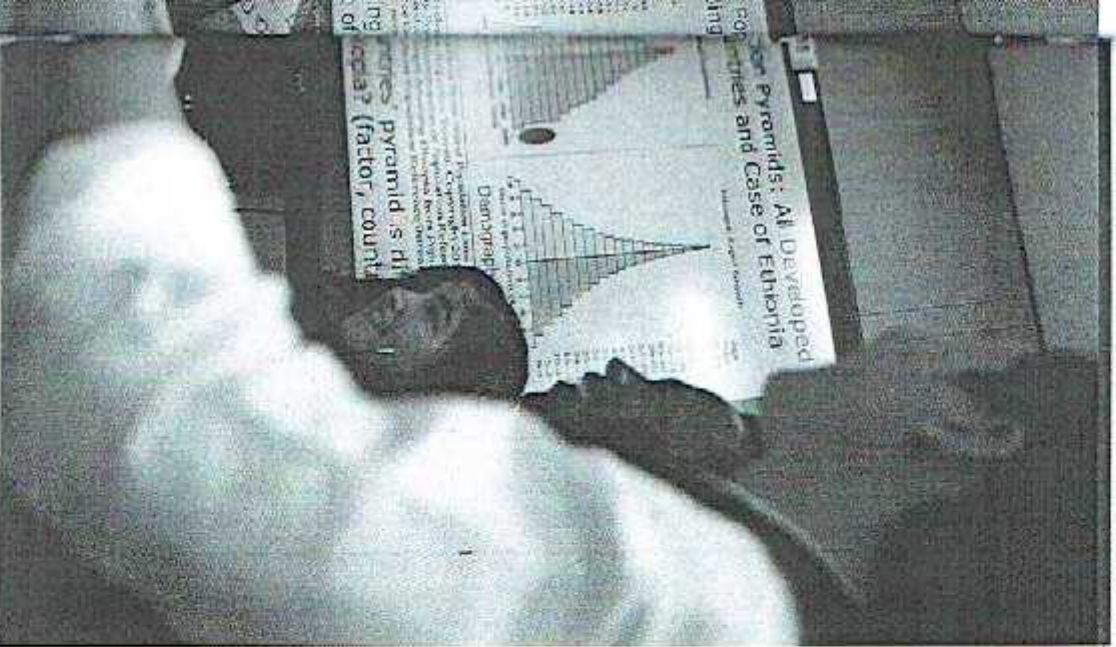
Ph.D. Program

KDI School offers Ph.D. programs in Public Policy and Development Policy. The goal of the Ph.D. program is to prepare qualified candidates and help them produce cutting-edge research in their chosen field. The programs also aim to equip students with the skills they need to ascend to leadership positions in the public or private sector.



Shape the world, pioneer the future!

Learning process and Sharing knowledge
to achieve sustainable development



	Full-time Program	Part-time Program* (Residents in Korea Only)	Ph.D. Program
Programs	<ul style="list-style-type: none"> • Master of Public Policy • Master of Development Policy • Master of Public Management 		<ul style="list-style-type: none"> • Ph.D. in Development Policy (Full-time) • Ph.D. in Public Policy (Full-time) • Ph.D. in Public Policy (for Domestic Policy Practitioners)
Study Areas	<ul style="list-style-type: none"> • Finance and Macroeconomic Policy (MPP) • Trade and Industrial Policy (MTP) • Public Finance and Social Policy (MPP) • Regional Development and Environment Policy (MPP) • Sustainable Development (MSP) • International Development (MIDP) • Public Administration and Leadership (MPLM) • Strategic Management (MSPM) • Global Governance and Political Economy (MGEPE) 		<ul style="list-style-type: none"> • Social Policy and Public Finance • Finance and Macroeconomic Policy • Trade and Industrial Policy • Development Policy • International Development Cooperation • Development Economics
Duration	<ul style="list-style-type: none"> • Minimum 1 year (3 semesters) • Coursework: 1st year at KDI School • Thesis Writing: 2nd year in home country 	<ul style="list-style-type: none"> • 2 years (6 semesters) 	<ul style="list-style-type: none"> • Full-time students: at least 3 years
Class Schedule	<ul style="list-style-type: none"> • Daytime (08:30-18:00) 	<ul style="list-style-type: none"> • Weekday Evenings (19:00-22:30) • Saturday (09:00-17:30) 	
Tuition	<ul style="list-style-type: none"> • 28,000,000 KRW • Scholarship opportunities available 		<ul style="list-style-type: none"> • Total 25,000,000 KRW (for 3 years) • 1st year: 15,000,000 KRW • Second and third year: 5,000,000 KRW (respectively) • From fourth year: 1,000,000 KRW per year
Requirements for Graduation	<ul style="list-style-type: none"> • Minimum 30-Cred including research project 		<ul style="list-style-type: none"> • 36 Credits • Qualifying Examination • Dissertation

* Part-time students may be offered a reduced number of courses.

MPP

MASTER OF PUBLIC POLICY

The Master of Public Policy (MPP) program is designed to provide global perspective and professional expertise in public policy areas. The program is highly regarded both in and outside Korea, particularly among developing countries and government officials. The faculty with outstanding research backgrounds and empirical knowledge offers a leading curriculum that integrates theory and practice. Students are required to take one of the economic policy study areas to cover 39 credits towards their graduation.

The highly diverse student composition provides a unique educational environment. Both domestic and international students from all walks of life, including the government, the media, and NGOs are able to share ideas, knowledge, as well as experiences, and build a dynamic global network.

| Academic Goals |

- Expand policy-makers' capability in policy planning, analysis and implementation
- Foster professionals in the field of economic and social policies

| Program Characteristics |

- Build area-specific policy expertise with economics as its base
- Utilize comprehensive and interdisciplinary research capacity of KDI, the top think-tank in Korea





MPP 2010

Marliana Yanti / Indonesia

*Chief Section of Vehicle
Periodical Inspection Facilities, Ministry of Transportation*



I work for the central government whose primary tasks are formulating policy, providing guidance and guidelines related to land transportation for local governments. What I have learnt from KDI School has helped me enrich my understanding and my point of view into a certain problem and understand problem solving not only from technical aspect, but also from a social aspect and economical aspect. This became a great asset for me in completing a given task related to formulating policies. KDI School also helped me broaden my knowledge about the outside world.

MPP 1999

Ambachew Mekonnen / Ethiopia

*Minister
Ministry of Urban Development and Housing*



My stay in Korea during the academic year 1999–2000, was a wonderful experience. It changed the way I look at things and has also inspired me to work harder under the Korean spirit of “We can do it”. I have been talking a lot about the miraculous economic performances of South East Asia particularly that of Korea and how there has been a rapid economic growth coupled with a decline in income inequality. Even during my PhD study in the UK half of my thesis was about the best experiences that 11 East Asian countries including Korea had at the core of the better-marriage bloc. This shows just how my mind is persistently influenced by the inspiration at the KDI School. Hence, undoubtedly, one of the main contributing factors towards my career evolution as an economist and succeeding politician are the inspirational lessons I received from the KDI School. While our country is striving to follow the Korean model of development, amongst my colleagues, I was also identified as a man that talked a lot about the decency, diligence, thriftiness, and hierarchical royalty of Koreans with mutual respect and an overall respectful mindset.

MDDP

MASTER OF DEVELOPMENT POLICY



**MASPAA
ACCREDITED**

The Commission on Peer
Review & Accreditation

Based on the KDI's hands-on experience on development policy of 47 years, the Master of Development Policy (MDDP) program offers a curriculum where students can examine various issues of socio-economic development in both theoretical and practical frameworks. The program is specifically targeted for international professionals, including government officials, development consultants, and regional specialists who wish to contribute to development policy-making.

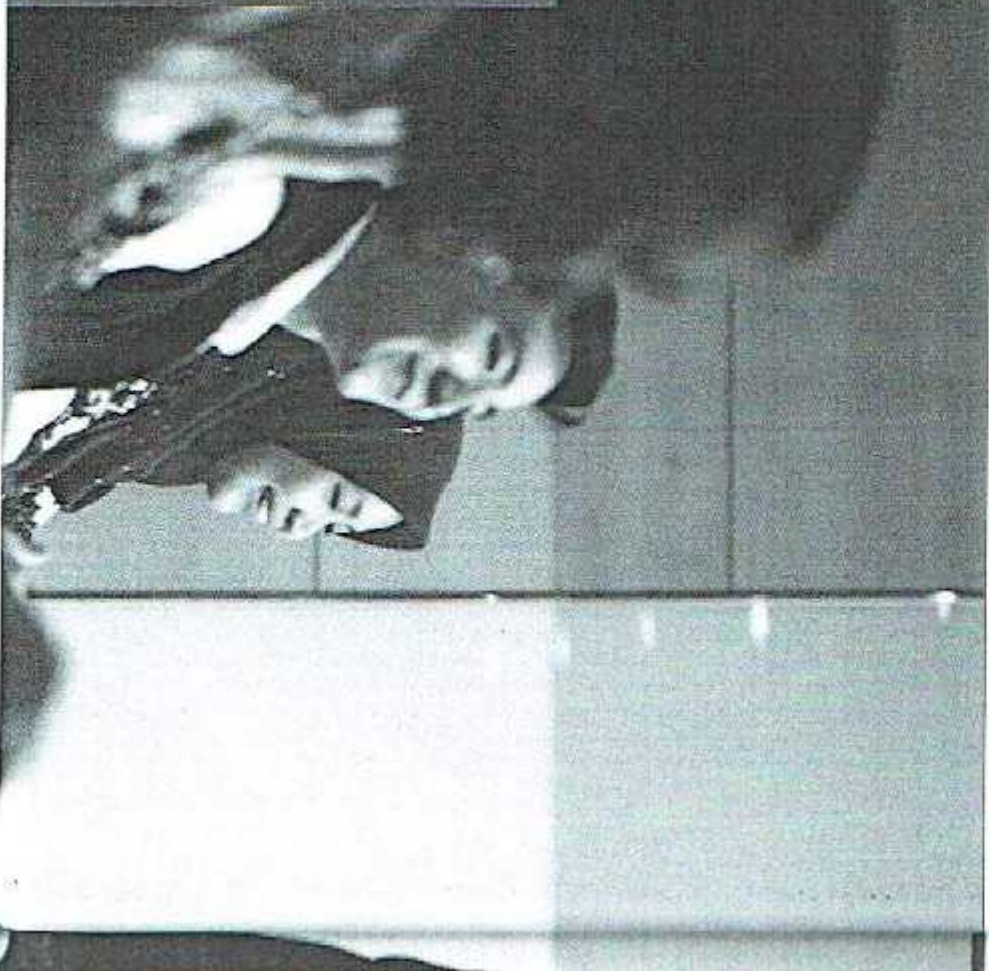
The program is also focused on fostering professionals in the field of the official development assistance (ODA). Students must take the required core courses as well as a certain number of courses from Sustainable Development or International Development areas.

| Academic Goals |

- Foster global leaders capable of understanding various issues pertaining to sustainable development and international development cooperation in both theoretical and practical frameworks.
- Equip professionals with the capacity to formulate policies based on education in public and private management as well as global leadership.

| Program Characteristics |

- Applicable program that combines development theories and practices of development.
- Sharing the KDI's hands-on experience on development policies of 47 years.
- Diverse student body composed of international professionals including government officials, development consultants, and regional specialists who wish to contribute to development policy-making.





MDP 2012

Gulla Jan / Afghanistan

Independent Directorate of Local Governance

The KDI School experiences were exceptional. Upon completing my study at the KDI School of Public Policy and Management, I was able to find an excellent job within one month. This was because of the professional training provided by the KDI School. Before I studied in Korea, I had worked with Ministry of Agriculture in a limited funded program but currently I am working with the Independent Directorate of Local Governance (IDLG) as governance officer where I am responsible for the oversight of the national program Stability in Key Areas funded by USAID.

The experiences of South Korea fit the Afghanistan environment well, as the South Korean situation was similar to Afghanistan. I would like to offer special thanks to the KDI School faculty and staff who provided excellent support during my life at the School.

MDP 2015

Rodrigo Alonso Aguilar Lobo / Costa Rica

Local Government of Curridabat

I am very proud of my master's program in KDI because it was there that I first learned about how to help my own people. It helped me to understand Korean development and how developing countries could learn from Korea's example.

Since the completion of the MDP program in KDI School, I have continued working in the University Of Costa Rica, where I have been conducting research on Education and Development. In 2016 I was elected to work in the Local Government of Curridabat, where I have implemented some projects about how limited resources could be designated to solve problems and improve people's quality of life. In future years I will continue implementing tasks to increase the participation of people in addressing public issues, and I will continue to improve people's quality of life.

MPPM

MASTER OF PUBLIC MANAGEMENT

The MPPM seeks to fulfill policy management needs in today's global environment through an integrative education program that covers various facets of management and leadership in both the public and private sectors. The aim of the program is to nurture professionals who can successfully navigate and manage the complexities of global, and private sector environments, make preemptive decisions to deal with the challenges, and have the capacity to put them into action.

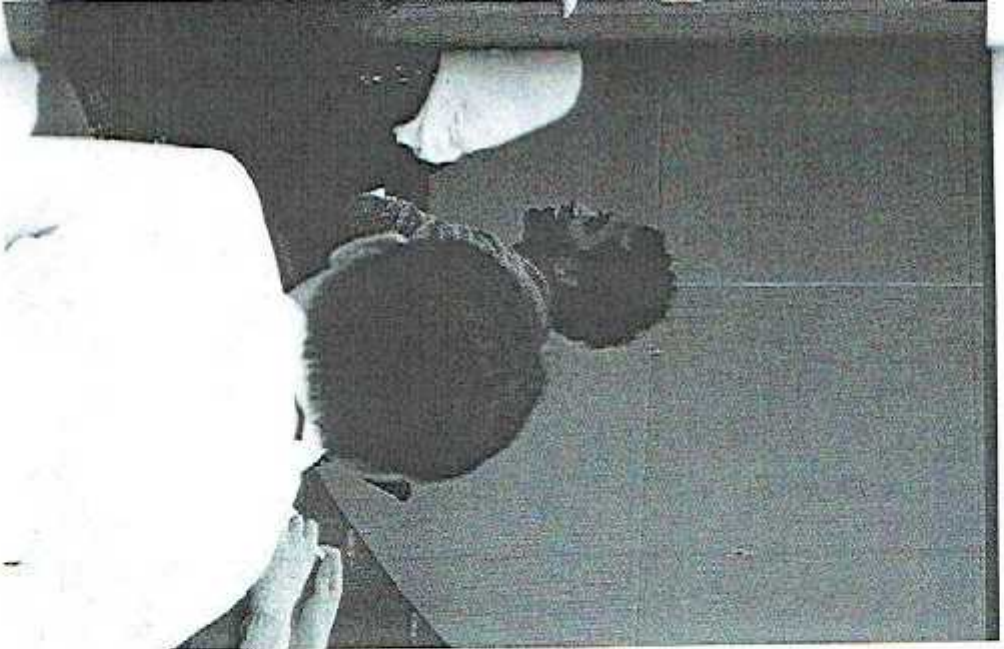
| Academic Goals |

- Nurture global leaders capable of successfully navigating and managing the complexities of global, private and public sector environments
- Equip professionals in the public sector with the capacity for policy management based on education in public and private management as well as global leadership

| Program Characteristics |

- The main target is public workforce from government officials and public sector workers
- Interdisciplinary convergence program of public administration, private sector management and global governance





MPM 2015

OGBEY, Patrick / Ghana

Project Assistant

*Governance Programme – Deutsche Gesellschaft für Internationale
Zusammenarbeit (GIZ) GmbH – Ghana*

Coming from a developing country like Ghana, and having pursued my undergraduate studies in Economics, I was eager to seize the opportunity to further my studies through a policy research institution. My pursuit of the Master of Public Management degree program, coupled with a concentration in Strategic Management and courses in Development Policy, has been of immense benefit to my professional and personal development as it afforded me the opportunity to obtain first-hand experience of South Korea's development trajectory. This experience equipped me with public policy formulation and implementation skills and knowledge which have been called upon during the course of my work on Good Financial Governance and Decentralization Reforms in Ghana.



Academic Programs Concentration

MPP

Finance and Macroeconomic Policy I

The concentration on Finance and Macroeconomic Policy aims to help students understand the theory, the practice, and the policy work in the areas of macroeconomics and finance. Target students include mid-career professionals in finance (regulators, central banks, financial supervisory authorities, self-regulatory agencies, and others) who come to work in such institutions. The top list of finance courses can also meet the needs of students from the private sector. Upon completion, students are expected to have a full understanding of two key areas: (1) relevant S+20 subjects, (2) a cohesive and conceptual financial regulatory system.

Selected Courses Offered

Andriof, Labor Market
Basics of Financial Regulation
Central Markets and Investment
Career Building: Economy/Policy Strategy
Financial Accounting
Financial Institutions and Markets
Financial Statements Analysis and Valuation
International Financial Management
International Macroeconomic Theory and Policy
Introduction to Financial Analysis
Investment Management
Monetary and Policy



Trade and Industrial Policy I

In this era of globalization, no country can enjoy economic prosperity without engaging in international trade. While domestic markets struggle to adjust themselves in the global market, industrial policy can facilitate the process. This concentration aims to offer theoretical knowledge and practical skills in the field of international trade and industrial policy. Legal and institutional arrangements in the world trade will be analyzed in the context of contemporary issues such as FTA, WTO, international trade negotiations, dispute resolutions, and etc. Target students include mid-career professionals in trade-related ministerial and business entities or international organizations, as well as those students who aspire to work in such institutions upon graduation.

Selected Courses Offered

Concepts in Korea's Development
Competition Theory and Practice
Current Trade Issues
Game Theory and Strategy
Industrial Policy and International Trade Regulation
Industrialization and Economic Development
Input/Output Analysis
Korean Economic Development
Market Economy and Government
Regulation Reforms and Practices
Regulation Theory and Practice
Science and Technology Policy
Theory and Policy of International Trade
Trade and Development
Trade and Industrial Policy in the Globalization Era
Trade Law and Policy Practice
Understanding Free Trade Agreements
Understanding the World Trading System

Public Finance and Social Policy I

The market is an indispensable mechanism for efficient resource allocation and long-term growth. The workings of the market, however, are often accompanied by extreme poverty, externalities, information asymmetry, and coordination failures, thereby compelling vulnerable individuals and communities of a lower end of possible income

To promote efficiency, equity and solidarity is a significant goal of social policy in this light. On the basis of economics and other social science disciplines, this concentration explores ways to tackle these challenges through taxes, government expenditures, and prudent regulations. Target students include mid-career professionals working in the fields of social policy, poverty alleviation, education, healthcare, social insurance, labor protection, and cultural policy.

Selected Courses Offered

Budgeting and Public Finance
Development and Labor Market Policy
Gender and Development
Human Resource Management in Government
Issues Related to and Public Policy
Issues in Labor Policy in the Era of Globalization
Korean Human Development
Labor Market Institutions and Practices
Market Economy and Government
Monitoring and Evaluation for Public Policy
Social Security and Welfare Policy
Tax Policy and Administration
Topics in Developmental Economics
Welfare Economics and Social Choice
Welfare Service Implementation

Regional Development and Environment Policy I

Sustainable Development and Green Growth are keywords in the 21st century development discourse. Leaders in the public sector need to understand the dynamic relations among economic development, environmental protection and social development with its concentration on students develop the knowledge and skill to build a draft regional development projects and policies considering environmental consequences. A current environmental impact assessment, 3) local-level stakeholder participation and orchestration, regional dispute resolution, and 4) understand development and environmental management programs. Graduates may find positions as local or regional development advisors and sector man-

agers, environmental analysts in state, central, and international agencies and NGOs, or infrastructure development in the private sector.

Selected Courses Offered

Cost-Benefit Analysis for Policy Decision Making
Economic Analysis of Investment Operations
Environmental Economics and Policy
Impact Evaluation Methods
Land Policy
Population and Development
Public Investment and Economic Growth
Public-Private Partnerships in Infrastructure Development
Real Estate Finance and Public Policy
Regional Development and Public Policy
Seminar on Project Appraisal and Evaluation Cases
Topics in Urban Economics
Urban Economics and Public Policy
Urban Transportation Policy
Urbanization for Economic Development

MDP

Sustainable Development I

Sustainable Development is a keyword in the 21st century development strategy. Leaders who want to make a difference in the world of sustainability need to understand the dynamic relations among the three pillars: economic development, environmental protection and social development. The key issues in SD are: (1) Economic development issues such as economic growth, productivity, technology, macroeconomics, regional evolution, poverty and labor; (2) Environmental protection issues such as environmental policy, energy, environmental dispute resolution, and climate change; (3) Social development issues such as education, population, gender, social capital, healthcare, human settlement, human rights, and social changes. The target students are professionals and future leaders in public sector, private sector, NGOs, and international organizations.

Selected Courses Offered

Behavioral Psychology and Public Policy
Challenges in Korea's Development

Shape the world. Pioneer the future!



Helping students share their knowledge to achieve sustainable development.

Development and Labor Market Policy

- Economic Analysis of Investment Questions
- Entrepreneurship and Innovation
- Environmental Economics and Policy
- Gender and Development
- Impact Evaluation Methods
- Industrialization and Economic Development
- Institutional Analysis
- Korean Human Development
- Labor Market Institutions and Practices
- Labor Policy
- Lessons of the Korean Miracle for Sustainable Development
- Macroeconomic Policy
- Migration and Environmental Sustainability in Development
- 5th and Behavioral and Public Policy
- Public Policy Governance in Public Decision Making
- Political Economy of Reform
- Measuring Development: Happenings in Korea
- Population and Development
- Productivity and Economic Growth
- Real Estate Finance and Public Policy
- Regional Development and Public Policy
- Science and Technology Policy
- Seminar on Project Approval and Evaluation Cases
- The United Nations and Sustainable Development
- Trends in Development Economics
- Types in Political Economy of Development
- Urban Economics and Public Policy
- Urban Transportation and Public Policy
- Urbanization for Economic Development

International Development I

How can we align international economic and financial policies with development? Leaders in the public sector need to have an answer for this important question, and this concentration offers theoretical knowledge and practical skills in various fields of study for the question. They focus in: (a) Global issues such as ODA, Trade, FDI, International finance, international organizations and (2) regional issues such as country or area studies. The target students are mid-career pro-

fessionals in the relevant field, and others who desire to work in public sector, NGO, international organizations, and trade-related private sector.

Selected Courses Offered

- Current Trade Issues
- Democracy, Political Mobilization and Economic Development: Korea's Experience
- FDI, Marketing & Promotion
- Foreign Policy Analysis
- Globalization and National Identity
- Industrial Policy and International Trade Regulation
- Introduction of Financial Management
- Issues and Analysis of Global Civil Society
- Korean Economic Development
- Middle Eastern Political Governance
- Policies for Development
- State Fragility and Development Policy
- The Labor Relations and Rema. Affairs
- Theory and Policy of International Trade
- Topics in North Korean Economy
- Topics in Chinese Economy
- Trade and Development
- Trade Law and Policy in Practice
- Understanding Free Trade Agreements
- Understanding the World Economy
- Understanding the World Trading System

MPM

I Public Administration and Leadership I

There is a growing demand for public administration skills for managing public sector organizations, which are characterized by limited resources and mandates, limited official capacity, resources constraints, and external political environments. This study area is designed to improve comprehensive problem-solving skills in public administration and management. By re-orienting core understanding of global and private policy environments through case studies and enhancing ones practical skills in solving real world problems, including conflict resolution and public sector management.

Selected Courses Offered

- Behavioral psychology and Public Policy

Budgeting and Public Finance

- Budgeting and Public Finance
- Budget Management
- Cost-Benefit Analysis for Policy Decision Making
- Fiscal Government and Governance
- Fiscal Policy and the Political Process
- Governance, Communication Service
- Human Resource Management in Government
- Managerial Accounting 3
- Managing and Implementing Sustainable Development
- Participatory Governance in Public Decision Making
- Performance Measurement and Measurement in the Public Sector
- Policy Process Analysis
- Public Management Innovation and Reform
- Regulation, Behavior and Practices
- Tax Policy and Administration

I Strategic Management I

This study area aims to equip students with strategic management and leadership skills required for managers in the public and private sectors. Strategic Management and Leadership provides students with the theoretical knowledge and practical skills in the field of strategic management and studies policy implications therein. The classes use case studies of private corporations, as well as key success factors within the theoretical framework of strategic management. The courses are designed to nurture experts who are able to contribute to the business development and policy making. Target students include government policy makers, public and private sector managers, and future entrepreneurs interested in this dynamic field.

Selected Courses Offered

- Change Management
- Customer Relationship Management
- Entrepreneurship and Innovation
- FDI Marketing & Promotion
- Financial Accounting
- Financial Statements Analysis and Valuation
- Introduction to Financial Analysis
- Managerial Accounting
- Marketing in the Public Sector

Strategic Management I

As the challenges of development and public policy are increasingly connected with the forces of globalization, to study them requires an interdisciplinary approach. This concentration focuses on the reciprocity between local environmental investigations, local factors and service economic processes and vice versa. The concentration aims to educate mid-career professionals and future public servants to acquire analytical skills in order to deal with high public sector issues necessary to play a leading role in the (re-)organizing global, interdependent field of policy making. This study area offers to students to acquire analytical skills and future public servants to acquire analytical skills, intellectual depth and high public spirit. Next, it allows and encourages any approach and methodology to explore the transfer and problem in the area of global governance, politics, and economy.

Selected Courses Offered

- Democracy, Political Mobilization and Economic Development: Korea's Experience
- Foreign Policy Analysis
- Global Governance Issues: Directors & Cooperation
- Globalization and National Identity
- International Political Economy
- International Relations in East Asia
- Middle Powers in Asian Governance
- Policies for Development
- Political Economy of Reform
- Making Development Progress in Korea
- Social Security and Welfare Policy
- The United Nations and Global Affairs
- Theory and Practice of Political Economy
- Topics in North Korean Economy
- Understanding the World Economy

Ph.D. PROGRAM

KDI School offers Ph.D. in Public Policy and Development Policy. The goal of the Ph.D. program is to prepare qualified candidates and help them produce cutting-edge research in their chosen field. The program also aims to equip students with the skills they need to ascend to leadership positions in the public or private sector.

- **Curriculum Tailored to Your Research Topic**

KDI School encourages Ph.D. students to take the initiative in shaping their own course of study, once they complete the required courses during the first 1-2 years.

- **Faculty Involvement**

KDI School also encourages Ph.D. students to collaborate with the faculty on research projects. Along with an emphasis on supervised research courses, the KDI School provides an environment where students work closely with professors.

- **Expected Target Students**

KDI School selects individuals with demonstrated potential for research. Applicants are also expected to have a research topic firmly in hand.





|| Required Courses |

- **Ph.D. In Development Policy(Full-time)**
Foundations of Public Policy, Microeconomics I&II,
Econometrics I&II, Development Economics I&II
- **Ph.D. In Public Policy(Full-time)**
Foundations of Public Policy, Microeconomics I&II,
Advanced Macroeconomic Policy, Econometrics I&II
- **Ph.D. In Public Policy(for Domestic Policy Practitioners)**
Economics and Policy, Governance and Institutions, Government
and Policy, Budgeting, Theories and Practices, Policy Design and
Evaluation, Research Methods, Advanced Quantitative Methods,
Case Study and Writing Practicum

* List of required courses for Public Policy program subject to change

Ph.D. in PP 2012

LAILA, Ume / Pakistan

*Assistant Professor
National University of Science & Technology, Islamabad*



The Ph.D. in Public Policy is without a doubt packed with all the essentials one requires to pass the competitive civil service examinations. It helps a student develop a holistic view of the world such that they are aware of all of the known challenges of the time, including those related social, political, economic and environmental issues. The prerequisite of having the vital knowledge of a public servant is met through the degree program. After working for the Department of Ports & Shipping as a program & policy officer, I later became an assistant professor within the Government & Public Policy department at the National University of Science and Technology.

My career in the public sector and academia have been strongly influenced by the high integrity and ethical standards of the KDI School. All of the hard work and sleepless nights at KDI School of Public Policy have paid off.

Academic Programs

KDI School Faculty

I Sustainable Development and International Development I

Name	Education	Professional Field	Position
CHUN, Hongtaek	Ph.D. Cornell Univ.	Economic Development / Economic Cooperation in East Asia	Professor
HAN, Baran	Ph.D. Cornell Univ.	Development / Public Economics	Professor
KIM, Eooyuel	Ph.D. Colgate Univ.	Development Economics / Sustainable Development	Professor
KIM, Dongseok	Ph.D. Stanford Univ.	Productivity-Growth / Input-Output Analysis	Professor
KIM, Dongyoung	Ph.D. Massachusetts Institute of Technology	Environmental Planning / Public Dispute Resolution	Professor
KIM, Jaonyoung	Ph.D. UC San Diego	Economic Development Finance / Money & Banking	Professor
UM, Wonhyuk	Ph.D. Stanford Univ.	Public Enterprise Reform / Economic Development	Professor
PARK, Jin	Ph.D. Univ. of Pennsylvania	Development Economics / Government Reform	Professor



Name	Education	Professional Field	Position
WANG, Shun	Ph.D. Univ. of British Columbia	Development Economics / Subjective Well-being	Professor
YOU, Jongil	Ph.D. Harvard Univ.	Macroeconomics / Development Policy	Professor
LEE, Donguk	Ph.D. Univ. of Kentucky	International Development / Institutional Reform	Visiting Professor
UM, Youngjae	Ph.D. Univ. of Chicago	Competition Policy / Financial System	Adjunct Professor
NAM, Sangwoo	Ph.D. Massachusetts Institute of Technology	Development Economics / Macroeconomics	Emeritus Professor
MARITES M. Tiongco	Ph.D. Univ. of the Philippines Los Baños	Agricultural Economy	Visiting Professor
OH, Joann	M.A. Stanford Univ.	International Public Policy	Visiting Professor
YOUNG, Soogil	Ph.D. The Johns Hopkins Univ.	Structural Growth / Economic Development	Visiting Professor

Shape the world, pioneer the future!

Expanding policies and sharing knowledge
to achieve sustainable development



I Finance and Macroeconomic Policy I

Name	Education	Professional Field	Position
CHO, Dongsil	Ph.D. Univ. of Wisconsin, Madison	Macroeconomics / International Finance	Professor
CHOI, Taehye	Ph.D. Ohio State Univ.	Accounting	Professor
HAHM, Sangmoon	Ph.D. Univ. of Chicago	International Finance / Monetary Policy	Professor
KIM, Hyunwook	Ph.D. Columbia Univ.	International Finance / Macroeconomic Policies	Professor
LEE, Jinsoo	Ph.D. Georgia Institute of Technology	Investment / International Finance	Professor
SOHN, Woock	Ph.D. Columbia Univ.	Banking / Finance / Monetary Policy	Professor
HWANG, Min	Ph.D. U.C. Berkeley	Economics	Visiting Professor
HWANG, Sunjoc	Ph.D. Univ. of Texas at Austin	Economics / Financial Economy	Adjunct Professor
JUNG, Kyuchul	Ph.D. Univ. of Wisconsin, Madison	Economics	Adjunct Professor
KANG, Moonsoo	Ph.D. Univ. of Minnesota	Macroeconomics / Economic Development	Visiting Professor
LEE, Kyewoo	Ph.D. Michigan State Univ.	Development Economics	Visiting Professor
LEE, Youngki	Ph.D. Boston Univ.	Finance / Economics	Visiting Professor

II Trade and Industrial Policy I

Name	Education	Professional Field	Position
BAEK, Jisun	Ph.D. Columbia Univ.	Industrial Organization / Macroeconomics	Professor
LEE, Siwook	Ph.D. Univ. of Michigan	International Trade / Economic Development	Professor
LEE, Suil	Ph.D. Univ. of Wisconsin, Madison	Industrial Organization / Regulation & Competition Policy	Professor
NAM, Ichong	Ph.D. Univ. of Michigan Ann Arbor	Industrial Organization / Competition Policy	Professor
SHADIKHODAEV, Sherzod	Ph.D. Korea Univ.	International Trade Law / WTO	Professor
TABAKIS, Christosimos	Ph.D. Columbia Univ.	International Trade	Professor
AHN, Sangheon	Ph.D. Massachusetts Institute of Technology	Economic Growth & Development / International Economy	Adjunct Professor
KANG, Youngchul	Univ. of Pittsburgh	Regulation Reform	Visiting Professor
LEE, Sungjo	M.A. International Institute of Public Administration, Paris, France	Comercio Policy	Visiting Professor
SONG, Heeghan	Ph.D. Syracuse Univ.	Macroeconomics / International Economy	Visiting Professor
YOO, Jungho	Ph.D. Univ. of Wisconsin, Madison	International Trade / Economic Development	Visiting Professor

Academic Programs

| Public Finance and Social Policy |

Name	Education	Professional Field	Position
CHOI, Seulki	Ph.D. Univ. of North Carolina at Chapel Hill	Demography, Social Quality	Professor
KIM, Taehong	Ph.D. Massachusetts Institute of Technology	Public Finance	Professor
LEE, Jinho	Ph.D. Cornell Univ.	Labor Economics / Science and Technology Policy	Professor
PAIK, Sungjoon	Ed.D. Harvard Univ.	Education Policy / Technical Vocational Education and Training	Visiting Professor
SHIN, Jeoun	Ph.D. Texas A&M Univ.	Health Economics	Professor
YANG, Heesung	Ph.D. U.C. San Diego	Labor Economics / Development Economics	Professor
YUN, Heesuk	Ph.D. Columbia Univ.	Fiscal and Welfare Policy	Professor
CHOE, Byungho	Ph.D. Univ. of Georgia	Social Security	Visiting Professor
JEONG, Insoo	Ph.D. State Univ. of New York	Labor Economics	Visiting Professor
KIM, Samin	Ph.D. Ohio State Univ.	Economics	Visiting Professor
ROH, Keesung	Ph.D. Ohio State Univ.	Economics / Public Finance	Visiting Professor
SUN, Sangnok	Ph.D. Stanford Univ.	Economics / Social Welfare Policy	Visiting Professor
YEON, Haecheon	Ph.D. City Univ. of New York	Comparative Economics	Visiting Professor

| Regional Development and Environment |

Name	Education	Professional Field	Position
CHU, Man	Ph.D. Univ. of Pennsylvania	Urban Economics / Real Estate Finance	Professor
KIM, Donyoung	Ph.D. Massachusetts Institute of Technology	Environmental Planning / Public Dispute Resolution	Professor
LEE, Jongyeon	Ph.D. Univ. of Michigan	Industrial Organization / Applied Microeconomics	Professor
CHOI, Songsu	Ph.D. Massachusetts Institute of Technology	Urban Planning / Urbanization Policy	Visiting Professor
JUNG, Heenam	Ph.D. Univ. of Hawaii	Land Policy	Visiting Professor
KIM, Jeongho	Ph.D. Univ. of Michigan	Urban-Environmental Planning / Regional Planning	Visiting Professor
KIM, Kangsoo	Ph.D. Univ. of Leeds	Transportation / Urban Planning	Adjunct Professor
LEE, Mundeon	Ph.D. Brown Univ.	Environmental & Resource Economics / Applied Microeconomics	Adjunct Professor
SUN, Kwangsoo	Ph.D. Worcester Univ.	International Development	Visiting Professor



Shape the world, pioneer the future!

Acquiring wisdom and sharing knowledge
to achieve sustainable development



I Public Administration and Leadership I

Name	Education	Professional Field	Position
CHOI, Changyong	Ph.D. Syracuse Univ.	International Development / Public Policy	Professor
K.M. Soonthee	Ph.D. Univ. at Albany - State Univ. of New York	Public Management and Governance / Human Resources Management	Professor
LEE, Junesoo	Ph.D. Univ. at Albany - State Univ. of New York	Public Management	Professor
LEE, Taehun	Ph.D. Univ. of Tennessee, Knoxville	Government Public Relations / Communication for Development / Digital Governance	Professor
LUU, Chiel	Ph.D. Indiana Univ.	Fiscal Administration and Budgeting	Professor

I Strategic Management I

Name	Education	Professional Field	Position
CHOI, Yoonkheong	Ph.D. Rutgers Univ.	E-Business / Marketing	Professor
JUNG, Kyon	Ph.D. Univ. of Illinois, Urbana-Champaign	Marketing / Business Ethics & Corporate Social Responsibility	Professor
LEE, Seungjoo	D.B.A. Iqbal Univ.	Strategic Management / Entrepreneurship & Innovation	Professor
KIM, Jihong	Ph.D. U.C. Berkeley	International Business	Visiting Professor
MICHELL, Anthony	Ph.D. Carnegie Univ.	International Investment / Marketing	Visiting Professor

I Global Governance and Political Economy I

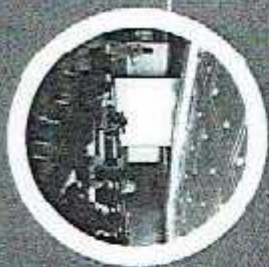
Name	Education	Professional Field	Position
PARK, Hanjoo	Ph.D. UC Berkeley	Political Economics / International Relations	Professor
KIM, Bounouton	Ph.D. Massachusetts Institute of Technology	International Relations / Political Science	Visiting Professor
ROBERTSON Jeffrey Scott	Ph.D. Australian National Univ.	Diplomacy / National Defense	Visiting Professor

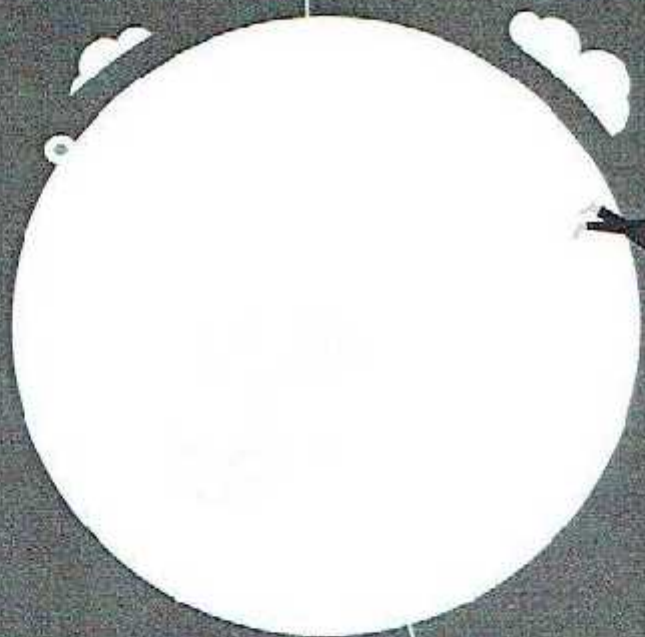
I Language I

Name	Education	Professional Field	Position
LEE, Gina	M.A. Yonsei Univ.	English / Academic Writing	Visiting Professor
LEE, Gyoung	M.A. Hankyuk Univ. of Foreign Studies	English / Academic Writing	Visiting Professor
LEE, Myungho	Ph.D. Yonsei Univ.	Korean Language	Visiting Professor
LIU, Usa	Ph.D. Univ. of Rochester	English Education	Visiting Professor
PARK, Jungho	M.A. Yonsei Univ.	Korean Language	Visiting Professor
PLUMB, Christopher	Ph.D. Univ. of Manchester	English / Academic Writing	Visiting Professor
RYU, Juhyun	S.A. Ewha Womans Univ.	Korean Language	Visiting Professor
YUN, Hanyoung	M.A. London School of Economics Univ. of London	Public Policy and Public Administration	Visiting Professor

GLOBAL PERSPECTIVE

KDI School instills a global perspective in students to help them develop a global mindset and the capacity to proactively respond to fluctuations in today's international environment.





Global Perspective

International Exchange and Career Development Programs

| GMP and Exchange Program |

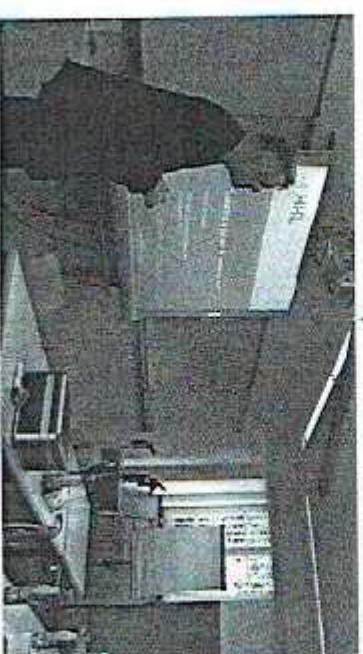
The GMP program is a 1+1 study abroad program for Korean mid-level government officials and private sector managers. The first year of study is completed at KDI School while the second year is spent at a partner institution overseas. If a student chooses to be a part of a Master's program at the partner institution, he or she will be eligible to receive dual degrees, one from the KDI School and another from the partner institution. The KDI School also hosts various foreign exchange programs with the aim of expanding students' international perspectives. Exchange programs provide opportunities to not only to earn credits from partner schools, but also chances to receive degrees.

| Mentoring |

The mentoring program is intended to give students practical advice on how to develop a career. Mentors are alumni whose profession fits the student's area of interest. KDI School's alumni network is a repository of professional experience, and the school plays an important role in connecting students with alumni. Current students draw upon the alumni's expertise to help them shape their future career path.

| Special Lectures on Career Development |

Guest speakers are KDI School alumni members or professionals employed in various career fields. Students are offered the opportunity to obtain detailed information about their chosen field and join a network of our alumni.



| Internship Opportunities |

KDI School actively provides information on internship opportunities that best meet students' needs. A large number of research institutes, public organizations, and international organizations contact KDI School to offer internship opportunities to our students. The high volume of internship offers by those institutions is a reflection of the excellent quality of our academic programs and the outstanding achievements of our student body.



| Job/Internship Search Support and Career News |

KDI School provides career information on the school website and the school bulletin boards. To help students search for jobs and internships effectively, online and offline advertisements for openings are regularly updated.

Shape the world. Pioneer the future!

Helping people and sharing knowledge
to achieve sustainable development



Development Research Center

Building upon the accomplishments of the International Development Exchange Program that supported economic policy-making in developing countries since 1982, the Development Research Center (DRC) was launched to promote a 'knowledge partnership' between Korea and its partner countries in the developing world. Using in-depth research on Korea's own development experience, the DRC aims to facilitate Official Development Assistance (ODA) and the implementation of development policy with concerted efforts from partner countries and international organizations.

What originally began as an incubator of global knowledge sharing, DRC now aims to develop its role as an active agent of change in development policy to help disseminate development know-how, thereby bridging the knowledge gap in the global community.



| Modularization of Korea's Development Experience |
Modularization of Korea's development experience aims to document, analyze and evaluate Korea's development experiences.

| International Research Partnership |
International research collaboration on topics of mutual and global concern for practical and flexible knowledge-sharing activities.

- FICDC on SDGs Perspectives on Korea's Economic Development "The Korean Story: Secrets of an Economic Miracle" (to be launched by September 2018) with UN SDSN (Sustainable Development Solutions Network) SDG Academy
- Science of Delivery (SoD) Case Study on Developing Country's Policy Implementation Experiences with Global Delivery Initiative (GDI)
- Delivering global initiative on "Managing for Development Results": Collaborative working with the Development Banks (IDB/ADB/AfDB)

| Korea Knowledge Partnership Program with the World Bank Group |
Joint knowledge sharing program with the World Bank Group for better dissemination of Korea's experience and policy lessons with the global community by conducting a research on didactic policy implementations and delivering capacity building training for public sector

- officials from developing countries
- KDI Seico-World Bank Co-Research Projects on Mapo Development Policy
- International Conference/Workshops/Seminars on Global Development Issues
- Disseminating Korea's Development Experience Modules through Global Network of World Bank Group

- | KDI School-World Bank Joint Impact Evaluation Research |**
- Impact Evaluation of the Yunnan Early Childhood Development Project in China (2016-)
 - Longer-term Impacts of On-the-job Training on Labor Market Outcomes: Evidence from Dual Training System in the Philippines (trial project duration: 2015-2017, and follow-up study: on-going)
 - Impact Evaluation Workshop with the World Bank Group 3ie (2012-)

| KDI School-KOICA Joint Impact Evaluation Research (2016-)|

- Impact Evaluation on rural development project in Myanmar and Cambodia

| Korea's Economic Development : Empirical Study Series (2015-)|

- Clometric study series to focus on Korea's development experiences

Global Perspective

Center for International Cooperation and Capacity Building

KDI School's Center for International Cooperation and Capacity Building (CICCB) offers various learning programs for government officials from around the world, ranging from working-level officials to high-level decision makers. The CICCB also hosts the Sejong Academy Program to enhance the policy capacity of government officers and national research institute researchers in Korea. By sharing Korea's phenomenal economic development experiences and disseminating its know-how and key lessons, the CICCB strives to enhance the participants' abilities to identify how to better achieve meaningful and sustainable growth in their respective countries, which are committed to promoting positive change and overall development.



Global Leadership Program I

The objective of the program is to enable participants to enhance their contributions towards reaching G20 development goals set forth at the Seoul G20 Summit in 2010. The program has been designed to drive momentum in implementing action plans at each subsequent G20 Summit.

Capacity Building Program on Public Policy for Latin America and the Caribbean Countries (LAC)

Capacity Building Program on Public Policy for Latin America and the Caribbean Countries supports the establishment of the Regional School of Public Policies for Development (RRPD), which aims to provide quality education in Public Policy and Development Policy for LAC. The CICCB also carries out local training programs for regional policy makers and sends an ad-

visory group to conduct local consultations in member countries.

Global Development Learning Network (GDLN) I

The Global Development Learning Network (GDLN), a World Bank initiative, is a unique partnership of over 80 affiliates in about 56 countries providing learning solutions for development using an educational platform featuring web-based outlets and videoconferencing facilities. The GDLN Korea Center offers blended Learning Programs comprised of videoconferencing sessions and face-to-face training on Korea's development experiences to impart educational content on development. As the GDLN Global Secretariat, KDI School acts as the GDLN network's central communication hub that facilitates the building of stronger global partnerships within and among GDLN affiliates.

Shape the world. Pioneer the future!

Partnering, cooperating and sharing knowledge
to address sustainable development



International Development Cooperation Capacity Building Programs I

- Short- and long-term fellowship programs in Korea and other developing countries in Asia
- International conferences on capacity building for civil society actors working towards international development cooperation

International Partnership Programs I

International Partnership Programs aim to enhance the capacity of government officials and policy makers from transitional economies through training programs and workshops that share Korea's development experiences.

Sejong Academy Program I

The program aims to enhance the policy capacity of government officers and national research institute researchers in Korea by sharing current and pressing issues and impactful knowledge related to 'Economic Policy', 'Administrative Reform' and 'Global Strategy' for the sustainable development of Korea.

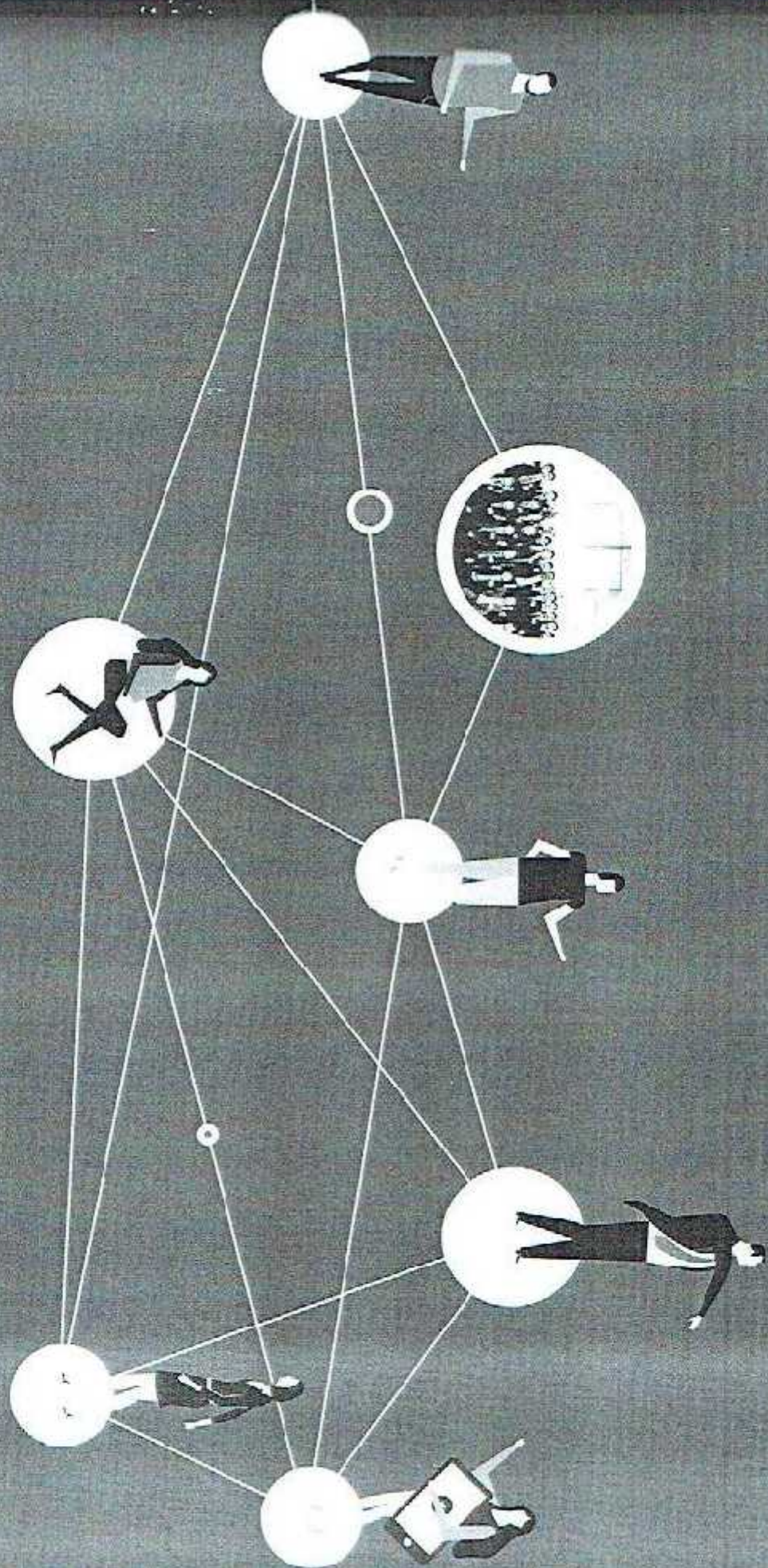
Capacity Building & Knowledge Sharing Programs I

- Leadership Development Program for the MPA students of APA under the President of Uzbekistan
- Training Program for Indian Administrative Service (IAS) Officers: Korea Study Tour
- Executive Training Program for the Thai Civil Service Officers
- Korea Study Program for the Bangladesh Civil Service Officers
- Enhancing the Capacity of Officials and Employees of the Office of Government and Central Agencies (Vietnam)

WORLDWIDE NETWORK

KDI School has an extensive global network with world class partner institutions. KDI School also has diverse alumni network all over the world. Both platforms are crucial in training the next generation of global leaders.





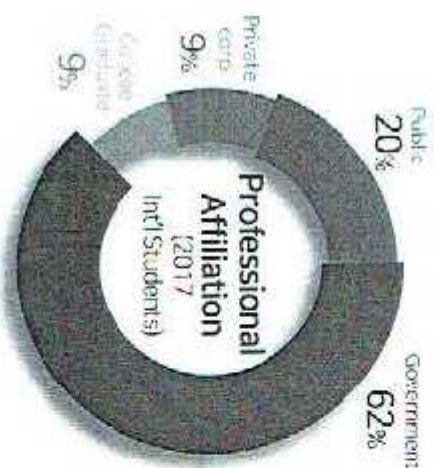
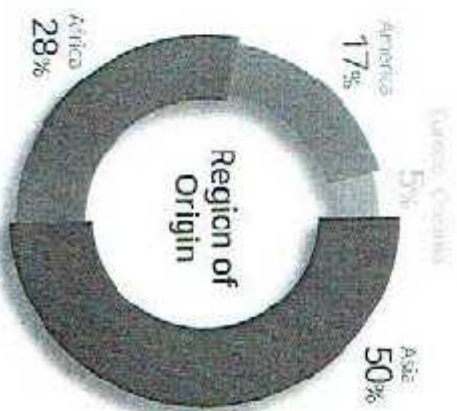
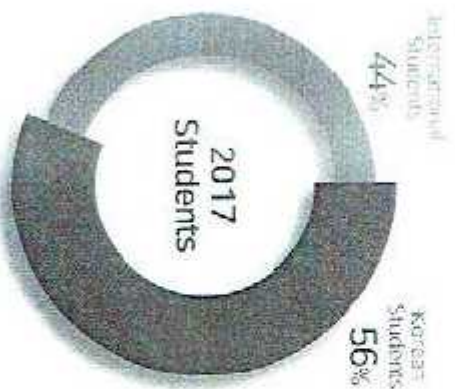
Worldwide Network

Student & Alumni Profile

KDI School is home to a vast student and alumni network that stretches all over the world. Students come from a variety of backgrounds including over 3,100 Korean alumni members in government ministries, public organizations, private corporations, the finance sector, media corporations, and NGOs. The network is equally diverse for foreign alumni counterparts with current and former students from key government ministry offices in 131 countries. Such an extensive network creates synergy and helps KDI School and its students build a truly diverse support structure that provides mutual support in various fields.



| 2017 Admitted Student Profile |



Shape the world. Pioneer the future!

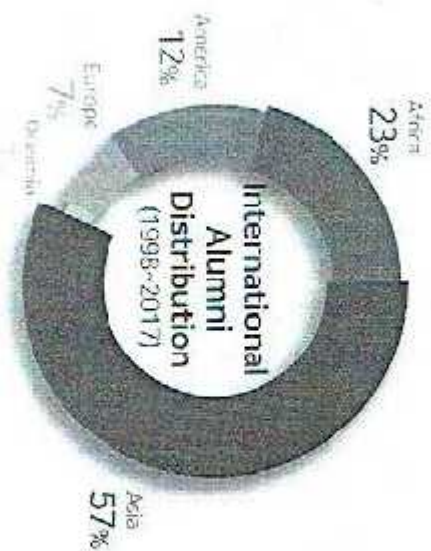
International and Strategic Knowledge
to achieve sustainable development



International Alumni Categorized by Nationality (1998-2017) |

Country	Total	Country	Total	Country	Total	Country	Total
Algeria	27	Dominican Republic	12	Liberia	4	Sri Lanka	1
Albania	2	East Timor	6	Lithuania	8	Slovakia	10
Algeria	12	Ecuador	11	Mexico	4	South Africa	3
Antigua and Barbuda	1	Egypt	22	Malawi	25	Spain	2
Argentina	1	El Salvador	14	Malaysia	22	South Africa	6
Armenia	3	Eritrea	9	Maldives	17	South Sudan	2
Australia	2	Ethiopia	64	Mali	2	Sri Lanka	23
Azerbaijan	10	Finland	9	Mexico	15	St. Lucia	2
Bahamas	1	France	2	Mexico	4	Sudan	8
Bangladesh	52	Gambia	11	Mongolia	51	Switzerland	2
Barbados	1	Georgia	8	Morocco	7	Sweden	7
Belarus	2	Germany	5	Mozambique	3	Taiwan	1
Belgium	1	Ghana	41	Myanmar	64	Tanzania	5
Belize	3	Greece	2	Namibia	2	Tanzania	33
Bhutan	23	Greenland	4	Nepal	22	Thailand	24
Bolivia	4	Guatemala	16	Netherlands	1	Togo	1
Bosnia-Herzegovina	2	Haiti	3	New Zealand	3	Turkey	4
Brazil	2	Honduras	2	Nigeria	5	Turkey	4
Brazil	1	Hungary	10	Nigeria	18	Turkmenistan	6
Burkina Faso	5	India	7	Pakistan	52	Uganda	17
Burundi	5	Indonesia	22	Pakistan	8	Ukraine	6
Cameroon	81	Indonesia	78	Paraguay	3	UK	2
Canada	15	Iran	12	Paraguay	4	USA	18
Canada	14	Iran	55	Peru	4	USA	18
Chad	1	Israel	2	Peru	14	Uzbekistan	68
Chile	4	Italy	1	Philippines	38	Venezuela	2
China	89	Jamaica	7	Poland	2	Vietnam	90
Colombia	18	Jakarta	3	Romania	10	Vietnam	8
Congo	1	Jordan	3	Russia	22	Zimbabwe	9
Congo	5	Kazakhstan	44	Russia	12	Zimbabwe	24
Costa Rica	3	Kenya	26	Saudi Arabia	2		
Cote d'Ivoire	11	Kyrgyzstan	26	Senegal	2		
Croatia	1	Laos	33	Senegal	2		
Czech Republic	21	Latvia	33	Senegal and Kenya	5		
		Lebanon	1	Senegal	2		

About 1,900 alumni (131 countries)



- Diverse Alumni Composition!**
- Composing global alumni network with over 1,900 foreign alumni from 131 countries in Master's degree since the establishment of school
 - Function as key human resources for building relationship with developing countries through forming network with core government officers and supporting overseas expansion of domestic companies

Worldwide Network

Overseas Partner Institutions

| KDI School Network |
 To help KDI School Students respond more effectively to the ever-evolving global environment, KDI School holds the largest partnership pool among stand-alone graduate schools in Korea, with a total of 58 institutes from 24 different countries across the world.



| Partnership Organizations |



| Partner Schools |



Shape the world. Pioneer the future!

Partnering overseas | Sharing knowledge
to achieve sustainable development



Overseas partner universities and organizations |

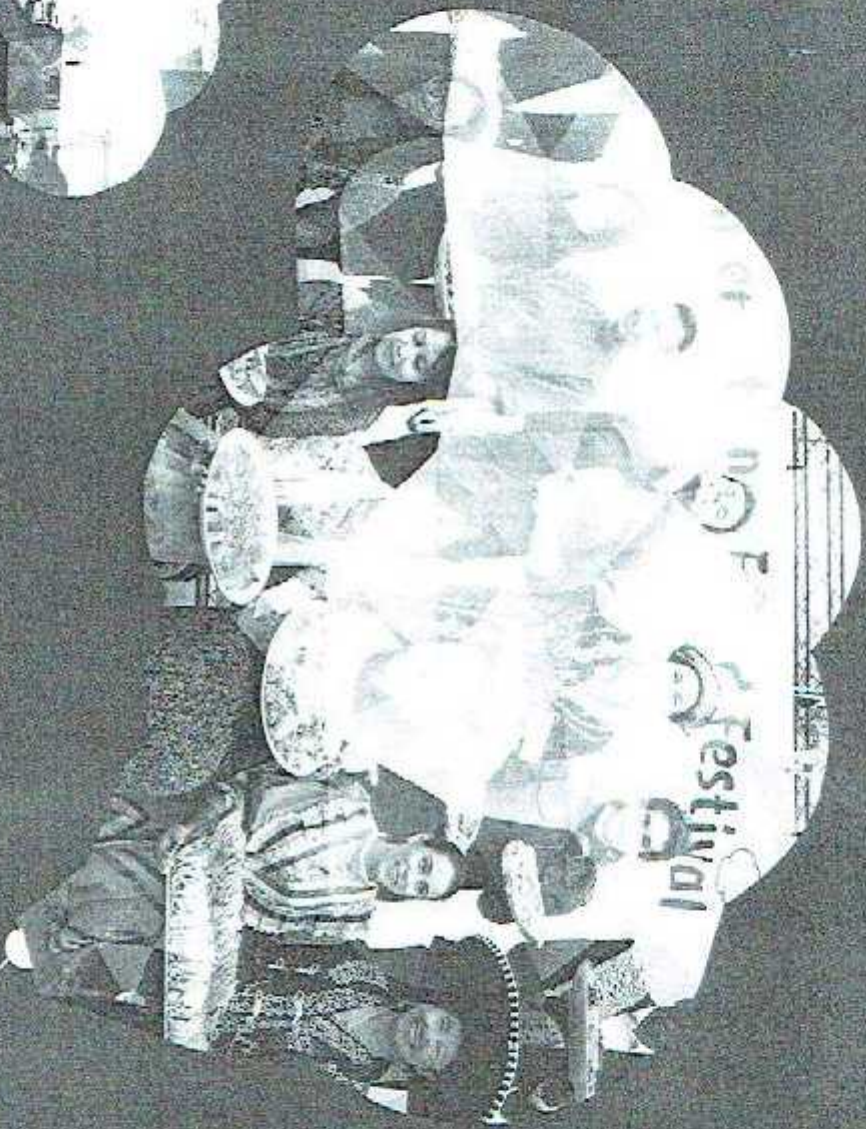
Nation	Institution	Nation	Institution	Nation	Institution
USA	Brandeis University	USA	Urban-Campaign (UUC)	United Kingdom	University of Surrey
	Cornell University		University of Kentucky		University of Birmingham
	Columbia University	USA	University of Missouri-Columbia	University of Nottingham	
	Duke University		University of Southern California (USC)	American University in Cairo	
	Georgetown University		University of Washington	Italy	Scuola Bicentennial School of Management
	Hawaii Pacific University (HPU)	Guatemala	Universidad de San Carlos de Guatemala	Japan	National Graduate Institute for Public Studies (NGIPS)
	HUI International Business School (Boston)	Netherlands	Erasmus University Rotterdam	China	Chinese Academy of Governance
	Indiana University	Germany	Leipzig Graduate School of Management, Handelshochschule		Fudan University
	Michigan State University (MSU)		Mexico	Furcation Universidad de las Américas, Puebla	Kazakhstan
	New York University (NYU)				Academy of Public Administration
	Purdue Rand Graduate School	Myanmar	Yangon University of Economics	Canada	Nazarbayev University
	Rutgers University (State University of New Jersey)	Malaysia	University of Malaya	Kyrgyzstan	University of British Columbia (UBC)
Saint Louis University (SLU)	Bangladesh	BRAC University	Thailand		Academy of Public Administration
Syracuse University ¹	Belgium	Katholieke Universiteit Leuven (KU Leuven)		Tsangrasat University	
University at Albany, State University of New York (SUNY)	Brazil	Escola de Administração Fazendária (ESAF)	France	Institut Supérieur du Commerce (ISC)	
University of California at Berkeley	Sweden	Jönköping University		Institut Supérieur de Commerce International de Danonque (ISCID)	
University of California San Diego (UCSD)	Singapore	National University of Singapore (NUS)	Australia	ESSEC Business School	
University of Chicago	Ethiopia	Ethiopian Civil Service University		Australian National University (ANU)	
University of Colorado at Denver	United Kingdom	Lancaster University Management School (LUMS)		University of Sydney	
University of Illinois at		University of Leeds			

56 institutions / 26 countries

EXTENSIVE SUPPORT

The most valuable asset to a school is none other than its students. Using cutting-edge facilities and equipments for academic/research activities as well as an extensive range of scholarships, KDJ School ensures the best possible environment not only for learning but also for everyday life.





Extensive Support

Campus Life & Information

| Campus with consolidated research/educational facility |

The campus is located in Seongju Special Autonomous City, a multifunctional administrative city where central government agencies and national research institutes are concentrated.

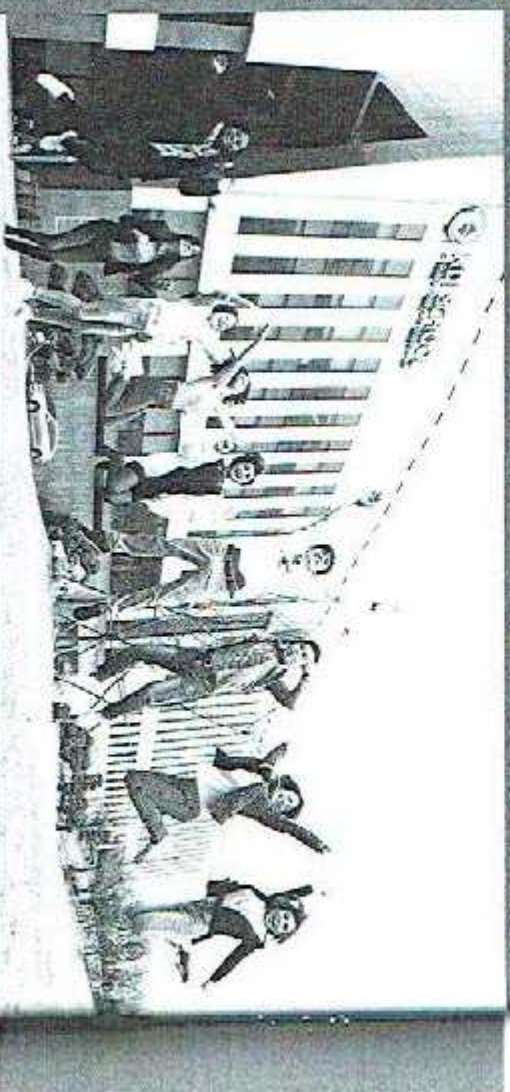
As the educational arm of the Korea Development Institute, the #1 think-tank in Asia, the KDI School offers premier educational opportunities. The students will have access to the intellectual know-how of KDI, accumulated over the last 47 years, as well as benefit from the studies of world-class researchers by directly communicating with them.

| Ultra-modern facilities |

The campus is an ideal educational environment for full-time students by providing them with a brand new dormitory, as well as student labs and learning facilities optimized for research and education.

| Geographical convenience |

The campus is located within easy access to the rest of South Korea. It takes 2 hours from Seoul, 3 hours from Busan, 2 hours from Gwangju to reach the campus.
Osong station is the nearest KTX station to KDI School and BRT (Bus Rapid Transit) runs between Osong Station and KDI School.



| Environment-friendly campus |

It will be an excellent opportunity for students to take a break away from the bustle of a city for a year and solely focus on their studies.

| Library |

The library provides comprehensive resources specialized in business, economics and policy for research. The library is also affiliated with the KDI library, which enriches the resources available to students. Additionally, students can access information conveniently using the digital library featuring an integrated search function.

| Student Chambers |

Student chambers are open 24 hours a day. Each chamber includes a desk and locker so that students may use their study spaces according to their needs.

Shape the world. Pioneer the future!

Education policies and Sharing Knowledge
to achieve sustainable development

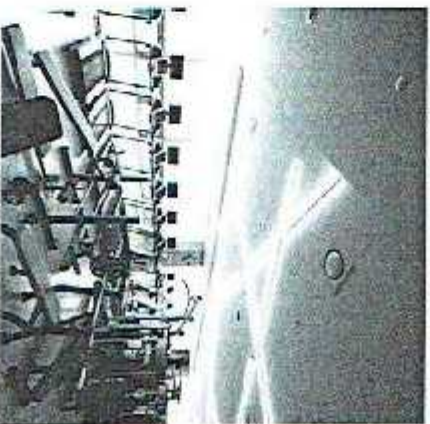


| Archives |

The school's archives preserve all school publications, records, visual records, donations, and memorabilia. It encourages students to use these resources on the archives website wherever they need to.

| Computer Lab |

The computer lab is open to students 24 hours a day. It provides high-performance computers, printers, scanners and high-speed internet access.



| Dormitories |

The dormitories are located in the campus, providing students with a permanent-friendly home all year round. Each room comes with beds, desks and toilet (shower rooms). Other facilities including laundry rooms, refrigerators are common and shared among the residents.

| Other Facilities |

The student lounge is equipped with a TV, a VCR, and comfortable seating. Sports facilities are offered on campus (gym, soccer field, swimming pool, ping-pong room, tennis court, shower rooms, etc). VOEISCUUM is at once a cafe and a vocational rehabilitation center for disabled people by Ministry of Health and Welfare and Vocational Rehabilitation Development Institute.

Extensive Support

Learning support

Students can avail themselves of KDI School's diverse educational support programs designed to enhance students' capacity for self-directed learning and research.

| K-Developedia (www.kdevelopedia.org) |

- A comprehensive repository of Korea's development experience
- Provides data on Korea's development from more than 2,000 institutions worldwide
- 5 menus including
 - Development Overview: Overview of Korea's development experience
 - Themes: Comprehensive one-stop references on key development issues of Korea
 - Resources: Collection of research papers and materials on development issues
 - KSP: Information on the Knowledge Sharing Program, a Korean government initiative for sharing Korea's development experience worldwide
 - Statistics: Key development data on Korea from Statistical Korea

| Writing Center |

- Personalized, one-on-one editing service for improving academic writing skills
- Workshops for all-used writing skills including research writing, citations, academic integrity, and more

| E-learning |

- Virtual Classrooms through eKDS, KDI School's Learning Management System
- Variety of Massive Open Online Courses on Korea's development experience
- Self-paced e-learning courses for foundation skills including STATA, Economics, Mathematics, Statistics among others



Shape the world. Pioneer the future!

Helping ourselves and Sharing Knowledge
to achieve sustainable development



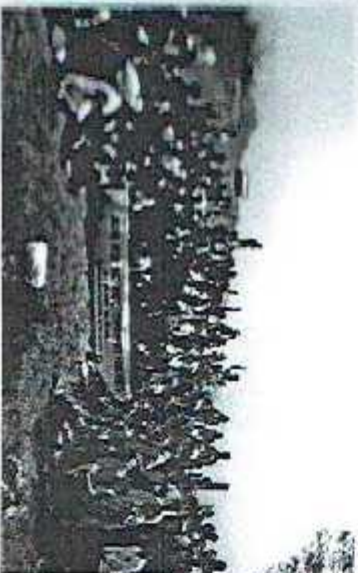
Social Activities

Cultural Events & Site Visits • To promote recreational students' understanding of Korean culture and society, the KDI School offers diverse cultural events such as a visit to the National Assembly of the Republic of Korea, Seoul City Tour, Korean Folk Village Tour, the 3rd Tunnel Tour, local festivals, etc.

Korea Field Research and Study • During the summer vacation, international students are offered opportunities to visit key historic and cultural sites, as well as Korea's leading industrial companies such as POSCO, Hyundai Heavy Industries, and a local government.

Home Visiting Program • To provide an opportunity for international students to enhance friendship and networking in the Korean community, the KDI School matches international students with Korean host families. Hosts may either choose to invite international students to their homes or arrange a family outing with them.

Club Activities • The purpose of the KDI School clubs is to provide students an opportunity to affiliate with other students through various activities. Student clubs are open to not only club members, but all school members who are interested. Students are encouraged to join a club to enrich their experience at KDI School.



national students an opportunity not only to receive guidance and support in their adjustment to the Korean community, but also to make global friends.

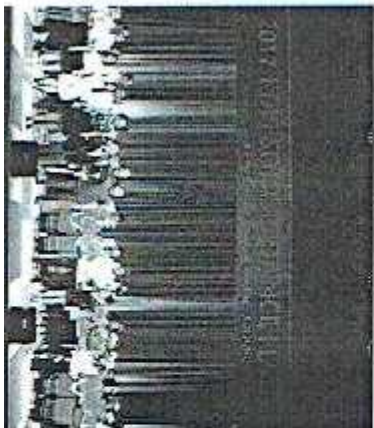
Student Forum • To foster a liberal research environment and to maximize the human resources, KDI School has been promoting the student forums. It is a students-only gathering for academic research. It is also to foster a better student interaction, and to build more networks inside the school.

Song and Dance Festival • Song and Dance Festival is one of special occasions to promote and celebrate the diversity of the KDI's community. The festival helps students socialize more as well as make another fond memory at KDI School. The concert is open to everyone and the participants may choose to sing, dance, play an instrument and more.

International Food Festival • The International Food Festival is a special occasion to celebrate diversity among students. Most international students prepare distinct native dishes of their home country for all of the KDI School family to enjoy. It provides a platform for the international student groups to present their unique customs and culture.



Sports Day • Sports Day is a time for all students and faculty to step away from the classrooms and onto the athletic field for fellowship, friendship, and community building.



Extensive Support

Scholarship Opportunities

| Global Ambassador Scholarship |

- **Benefits** : full tuition and monthly stipend for most recipients
- **Eligibility** : all overseas candidates are welcome to apply
- **Offering period** : spring and fall admissions

| Seoul G20 Global Leader's Fellowship |

- **Benefits** : full tuition, monthly stipend, and round-trip airfare
 - **Eligibility** : division head-level or minimum 6 years of working experience in the public sector
 - **Offering period** : spring and fall admissions
- ※ Seoul G20 Global Leaders Fellowship offers a relatively higher monthly stipend

| NIHPD GKS-KGSP

(Korean Government Scholarship Program) |

- **Benefits** : full tuition, monthly stipend, and round-trip airfare
- **Eligibility** : candidates from countries designated by NIHPD
- **Offering period** : fall admissions

| FSS-KFB-KOIS Scholarship |

- **Benefits** : full tuition, monthly stipend, and round-trip airfare
- **Eligibility** : government finance office/stanking sector only from Asian Countries
- **Offering period** : spring admissions

※ Financial Supervisory Service Korea nominates potential candidates to KDI School

| POSCO Fellowship |

- **Benefits** : full tuition, monthly stipend, and round-trip airfare
 - **Eligibility** : government officials from Asia
 - **Offering period** : all admissions
- ※ The KDI School nominates POSCO Asia Scholars from among the eligible applicants

| IBK Scholarship |

- **Benefits** : full tuition, monthly stipend, and round-trip airfare
 - **Eligibility** : Government officials recommended by IBK (Industrial Bank of Korea)
 - **Offering period** : fall admissions
- ※ IBK (Industrial Bank of Korea) nominates potential candidates to KDI School

| Colombo Plan Scholarship |

- **Benefits** : full tuition, monthly stipend, and round-trip airfare
 - **Eligibility** : government officials from 20 Colombo-Plan member countries
 - **Offering period** : spring admissions
- ※ The KDI School nominates Colombo Plan Scholar's from among the applicants recommended by the Colombo Plan Secretariat



Shape the world. Pioneer the future!

Returning process and Sharing knowledge
to achieve sustainable development



Admissions for International Students

International Applicants Qualification

Applicants who are Korean origins must meet one of the following:

- ① A foreign national whose parents also have foreign nationals
- ② An applicant who has completed at least 16 years of education (elementary, middle, high school, and undergraduate) in a foreign country.

Admission Requirements

- For Master's program: a bachelor's or an equivalent degree (min. 3 years)
- For Ph.D. program: a master's or an equivalent degree
- Ability to take classes in English
- Eligibility requirements for scholarship (if applicable)
- Work experience preferred (particularly in public sector)

Application Schedule*

Procedures	2019 Spring Admissions (Full-time Masters, Part-time Masters, Ph.D. Program)	2019 Fall Admissions (Full-time Master Only)
Application Deadline	Late Oct. 2018	Late Mar. 2019
Final Result Notification	Early December, 2018	Early July, 2019
Semester Start	Early February, 2019	Early September, 2019

*This schedule is subject to change.

Procedural

Submission of Online Application
Submission of Required Documents
Document Review
Interview
Final Selection

Required Documents

Submission of online application (<http://admissions.kdschool.ac.kr>) and required documents must be completed by deadline

No.	Documents	Master	PhD
1	Online Application Submission Statement of Purpose (must use the official form)	required	required
2	Official transcript from undergraduate institution(s)	required	required
3	Certified Diploma from undergraduate institution(s)	required	required
4	Official transcript from graduate institution(s)	If applicable	required
5	Certified Diploma from graduate institution(s)	If applicable	required
6	Recommendations	Two	Three
7	Two Photos (3cm X 3cm or photo file upload)	required	required
8	Copy of Passport	required	required
9	TOEFL, TOEIC, IELTS, or TEPS score report**	required	required
10	Employment Verification**	If applicable	If applicable
11	Dissertation Research Proposal	optional	required
12	Writing Sample in English	optional	optional
13	GRE score report	optional	optional
14	Video Essay	optional	optional
15		optional	optional

**Applicants who received the Bachelor's or higher degree from an English-speaking country may submit a certified copy of certificate of graduation or transcript issued by the university instead.

***Applicants of Special G20 Global Leader's Fellowship must submit Employment Verification to prove their eligibility. (If Applicants must be currently employed in the public sector (1) or a division head level official or (2) with minimum 5 years of working experience in the public sector.)

Important Notice

Applicants should follow instructions provided in application guideline which can be downloaded from admissions website (admissions.kdschool.ac.kr) during admissions period. Color application and scanned documents must be submitted by deadline. Submitted documents will not be returned.

2019 Admissions Open House

Date: September 15th, 2018
Time: 10:30am ~ 2:00pm

Venue: KDI School
KDI Open House for 2019 Admissions will be held on the 15th of September.

Contact Us
Admissions Office |
E-mail: InternationalAdmissions@kdi.ac.kr
Tel: +82-44-550-1281/1220
Fax: +82-44-550-1223